

US Cash Management



Solutions



TCR7



R7



RS7



RS3



SafePay



SOLUTIONS – ZILLION FAMILY



Information
Kiosk



Coin Roll
Dispenser



Sealbag
Deposit



Outdoor
Sealbag
Deposit



Coin Roll
Dispenser &
Sealbag Deposit



Transfer Unit



Coin Roll
Dispenser +
Modules



Financial Solutions



TCR7 Solution **BENEFITS**

- Increase revenue and cash flow
- Reduce cash-handling errors
- Reduce operating and staff costs
- Boost teller productivity
- Accelerate cash transactions at drive-up and over-the-counter
- Deliver a superior customer experience with personalized, quality service
- Cut costs with automated internal auditing
- Reduce cash footprint in branch



TCR7 Installations

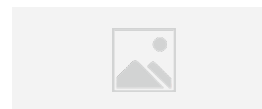




Partnerships through FI software providers



FI Integrations





SOLUTIONS – Deposit, Transfer, Recycle

Gunnebo can accept the following items in a diversity of solutions

Coins

Notes

Currency

Checks

Document

QBD
Deposit bags

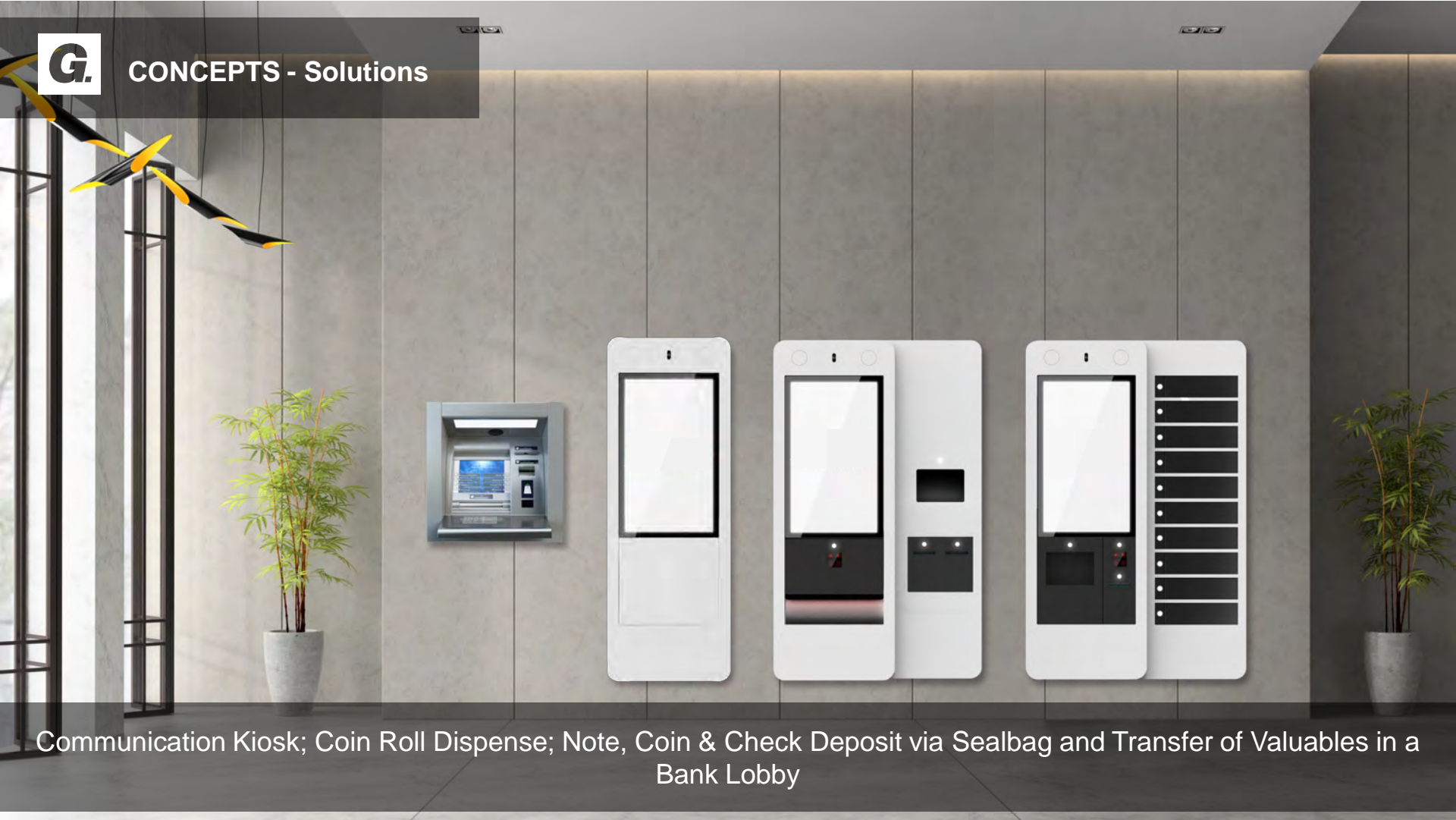


TRANSFER

GUNNEBO[®]
SOLUTIONS



CONCEPTS - Solutions



Communication Kiosk; Coin Roll Dispense; Note, Coin & Check Deposit via Sealbag and Transfer of Valuables in a Bank Lobby



Future RoadMap Overview

Z1k
Information Kiosk



Information Kiosk

- Advertisement / Interaction terminal
- Base 32" Touchscreen
- ADA compliant
- Optional:
 - Camera
 - Speakers

Base of all Zillion products

Z1sl
Smart Lock system



Smart Locker System

- Up to 40 lockers
- Security: TBD
- Interface: QR and Printer
- Optional: SafeBag (See Z1e)
- 10 lockers / Column
- Front load & Pickup
- 1-2 Columns left (Left hinged)
- 1-2 Columns right (Right hinged)

Z1c
Coin roll Solution



Coin roll dispenser

- Up to 8 denominations
- Optional:
 - Note dispenser, up to 6 cassettes
- Interface:
 - QR and Printer
 - POS and Printer
- Webshop

Z1ce
Combi CoinRoll + SealBag



Coinroll + SafeBag

- See spec of both machines

Z1e
SealBag Solution



SafeBag/Envelop deposit

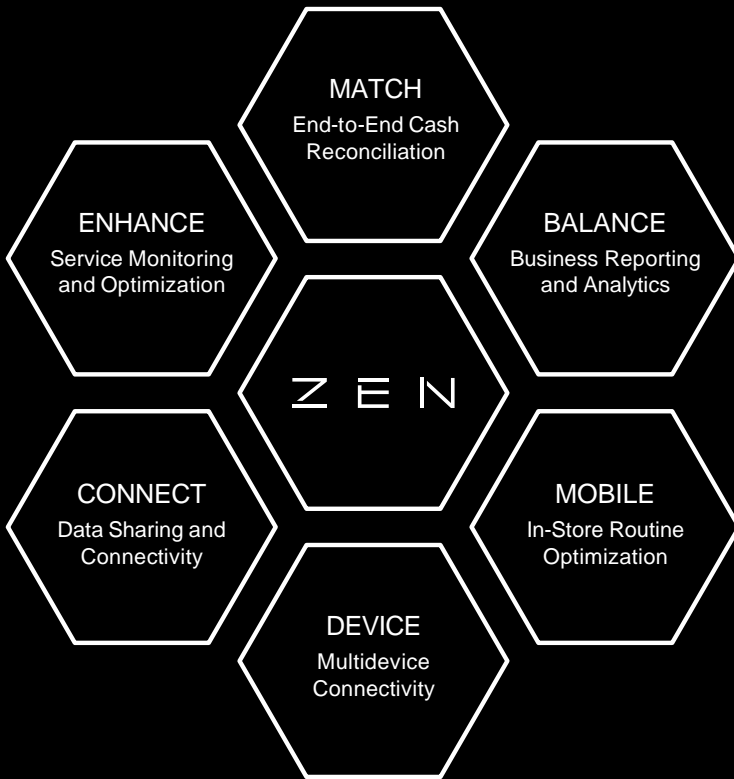
- Interface:
 - QR and Printer
 - Outdoor solution
 - Without Screen
- Safe CEN L-III

Z1combi
CoinRoll + Modules



Combi – Coinroll + Modules

- See spec of both machines



ZEN | A modular software

Modular Software Suite

ZEN adapts and connects to all your devices, applications, and external software, creating a perfect and secure ecosystem, where you can manage your entire business, from a single platform.

Add or remove functionalities based on your needs.



Retail (Cannabis) Solutions



SafeRecycling R7_L or R7_UL

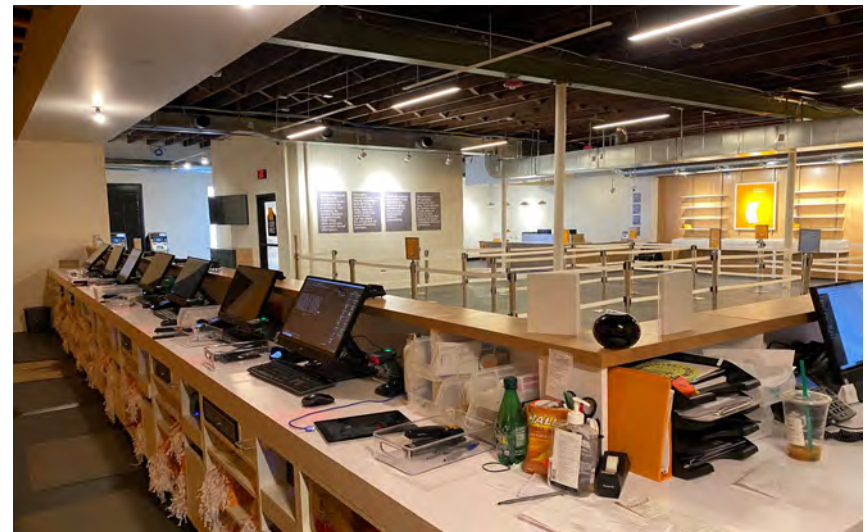
**MADE IN
USA**

Made in Cincinnati, OH





- Cannabis
 - Adult Use Dispensaries
 - AZ, CA, CO, MI, MA
 - Medical Dispensaries
 - AZ, CA, CO, MI, MA, OH
 - Distribution
 - CA





Modular Software Suite

ZEN adapts and connects to all your devices, applications, and external software, creating a perfect and secure ecosystem, where you can manage your entire business, from a single platform.

Add or remove functionalities based on your needs.



For a safer world

est. 1967

HAMILTON

CUSTOM MADE SECURITY

Operations & Manufacturing

Jim Mitchell

Labor

- We have Partnered with trade schools for skilled labor
 - Co-Op program for welders and assemblers
- Raised base compensation of skilled labor
 - Re-evaluating current employees compensation
- Replaced leadership in plants at floor level
- Renewed focus on training and employee empowerment
 - Re-focus on Quality first mentality
 - Employees can hold up product if they feel it is wrong.
- HR actively holding Job Fairs



est. 1967

HAMILTON

CUSTOM MADE SECURITY

Supply Chain

- Replaced supply chain leadership and team brought in more strategic leader
- Consolidated suppliers on key materials
 - Example we had 20 steel suppliers on a 4 million dollar spend, now we have 2 suppliers that we are now a priority.
- Supply chain team forecasted part needs through Q4 2022 on critical materials and placed PO's



est. 1967

HAMILTON

CUSTOM MADE SECURITY

Capacity

- Cross-training and sharing resources across departments based on demand.
- Purchased Machine shop
 - 2 Hass Vertical Machine Centers
 - 1 Hass Lathe
 - 1 CNC band saw
- Working to staff key roles on off shifts to eliminate bottlenecks.
- All key product lines are dual sourced allowing us to move work outside if internal capacity is used up
- Daily scheduling allows us to predict surges in capacity quicker allowing us to make necessary adjustments.
- Daily GEMBA Walks
- New Paint line



est. 1967

HAMILTON

CUSTOM MADE SECURITY

Work ongoing to establish a constraint oriented operational development

Product Process step and related weekly capacity

The first four industrial flows identified at Hamilton

Total hrs. / week:	100	x	x	x	x	x	x	x	x	x	x	x	x	x	x	x	x	x	x	x	x	
	Laser cutting	Bending	Drilling Tapping Stud.	SDL Welding	Spec. Welding	Spot Welding	Sub Welding	Safe Welding	Drawer Welding	Cabinet Welding	Body / Door Welding	Pouring	Door hanging	Painting prep	Wet painting	Powder Coating	Final Assy	Air Ass	Deal Drw. Ass	Testing	Pack	UL Label
Safes																						
HPG Safes																						
HPG Cabinets																						
Vault Doors																						
SDL																						
Deal Drawer																						
Air																						
Panels																						

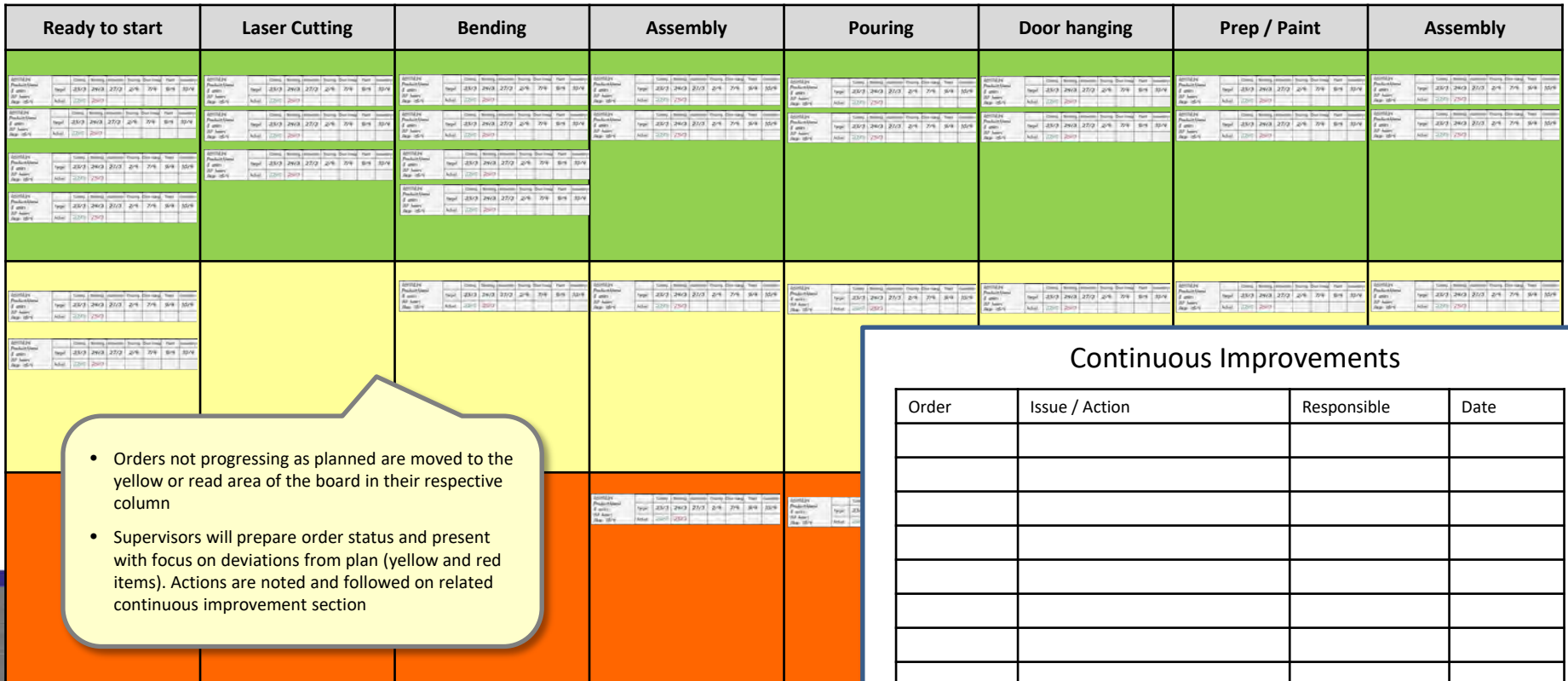
est. 1967



HAMILTON

CUSTOM MADE SECURITY

Board example – Composite safes



Board “traveler” – Composite safes

Each order is represented by a “traveler” made of a piece of magnetic flexible whiteboard fabric with details for order#, product name, #units, hours, target and actual date for finalization of each process step

<i>50111234</i> <i>ProductName</i> <i>3 units</i> <i>30 hours</i> <i>Ship: 15/4</i>		Cutting	Bending	Assembly	Pouring	Door Hang	Paint	Assembly
	Target	23/3	24/3	27/3	2/4	7/4	9/4	10/4
	Actual	22/3	25/3					



est. 1967

HAMILTON

CUSTOM MADE SECURITY

New Paint line



est. 1967

HAMILTON

CUSTOM MADE SECURITY

est. 1967

HAMILTON

CUSTOM MADE SECURITY

Tech Training & Support
Cliff Thompson & Allen Moore

est. 1967

HAMILTON

CUSTOM MADE SECURITY

Innovations/New Products

Todd Lefevers



The Hamilton Difference

- World Class Channel Partners
- Design our Products
- Customer Centric
- Call Center
- Build our Products
- Reinvesting in Business
- ISO 9001:15 Quality
- ISO 14001:15 Environmental
- ISO 18001 Health and Safety
- Tech Training

Hamilton Difference

- We make what you need
- Delivery
- Finish
- Custom Sizes and Shapes
- Great Product Diversity



98RH Replacement Head

- Mosler, Diebold, Chubb, Fortis, SSE, and etc..
- Ergonomic designed
- Only game in town
- Golden Opportunity





COVID Solutions

UVC Ultraviolet Light for HA-1000-XLR

- **Can Reach 99.9% Efficient**
 - **80% Energy Saving**
- **Environmental Protection**
- **Service Life is 10,000 Hours**
 - **Instant Start**



Works for Overhead HA1000-XLR

Retrofit Kit – XLR-UVCR

Replaces Pocket with Kit Already Installed – Reduces On Site Time

Both Kits

Include a Software Change That Will Start the Sanitizing Process by Pushing the Night Lock Button

Time

The Timer is Set for Three Minutes But Can Be Interrupted By Pushing the Night Lock Button (Internal Testing Shows That 45 Seconds Sanitizes 85% of the Outside Surface of the Carrier)

UVC Ultraviolet C Light Kit for Overhead HA-1000 XLR



UVC Light Kit

UVC Light Kit provides an automated infection prevention process at drive-thru, keeping tellers, associates and customers safe during the transfer of cash and goods.

- Keeps outside of carrier and inside of XLR's whole pocket sanitized
- Easy to install: remove plastic unit, place kit into place, secure with 4 bolts
- Retrofit for existing overhead XLRs or factory installed on new units

How It Works

1. Carrier should be in Customer Unit before starting sanitizing process.
2. Push Night Lock Button on Teller Unit to activate UVC LEDs.
3. Blue indicator light illuminates during sanitizing process.
4. This also starts a 3-minute timer that can be interrupted by pushing the Night Lock Button again to help next customer if needed.



HA-1000 XLR with Blue Indicator Light



Teller Unit

HAMILTON DRIVE-UP

New XLR Units
Factory Installed Kit
XLR-UVC

Retrofit Kit
XLR-UVCR

- UVC light disinfection reduces transmission of bacteria, viruses and other pathogens
- UVC germicidal LED strips 275nm can reach 99.9% sanitizing effect
- In just 45 seconds, unit can sanitize 85% of the carrier's surface
- 80% energy savings with LED solution
- 10,000 service hours or 2 1/2 year lane operation with LED technology
- Plug & Play operation saves time on site

est. 1987

HAMILTON
CUSTOM MADE SECURITY

A GUNNEBO COMPANY



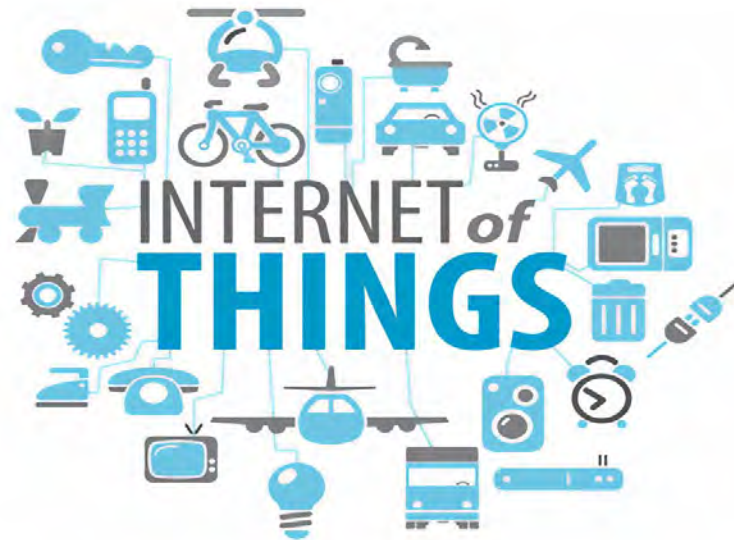
7775 Cooper Road | Cincinnati, OH 45242 | 513.874.3733 | hamiltonsecuritysolutions.com

©2020 Hamilton. 8/2020

HAMILTON
CUSTOM MADE SECURITY



NEW HUBS Board





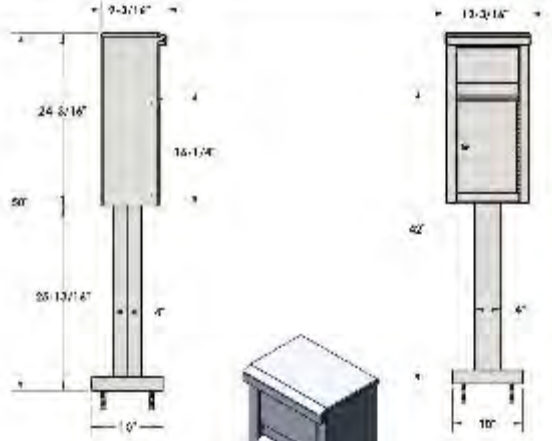



HUBS Board Benefits

- Diagnostics
- Logging
- Communication
- Monitoring
- Metrics for analytics
- Dashboard



Pedestal Deposit Box

- All Stainless
- Walk / Drive Up
- Key Lock
- Weather Resistant
- Envelope Storage
- Vinyl Labels

Pedestal Deposit Box		HAMILTON DRIVE/WALK UP
		Kit# PED-100-KIT <ul style="list-style-type: none">➤ 12"W x 24"H Deposit Box➤ 25" High Pedestal➤ Finish: 304 Stainless➤ Impact resistant➤ Durable Piano Hinge➤ Key Lock Operation➤ Envelope Storage➤ Raised bottom with Weep holes➤ Concrete anchors included for easy installation➤ Black Vinyl Labels
Standard Labels: DROP BOX, DEPOSITORY, LETTERS		
		EST. 1942 HAMILTON CUSTOM MADE SECURITY
		7775 Cooper Lane, Cincinnati, OH 45242-3727 513.875.1727 hamiltonsecuritysolutions.com ©2022 Hamilton 47027



New UL Night Depository Features Available 2022

- Weather Resistance
- Replaceable Bucket Stainless
- Built In Bucket Assist
- 1 ½" Lower Handle Height
- Increased Security





New UL Night Depository Features



- Envelope Storage
- Smoother Operating Mechanism
- Thru Axel
- Electronic Combination Lock Can Be Used
- Stainless Bucket



New UL Night Depository – Standard and Replacement Versions





New Safe Deposit Boxes

- Aesthetically Pleasing
- Brass Number Plates
- Black Piano Hinges
- Low Maintenance
- Standard SD Lock





New Safe Deposit Boxes

- Match Guard Key
- Custom Size Sections
- Bases
- Spacers
- Pull Shelf
- Metal Bond Boxes





UL Retest 2021

- Vault Door
- Vault Panels
- Steel Safes





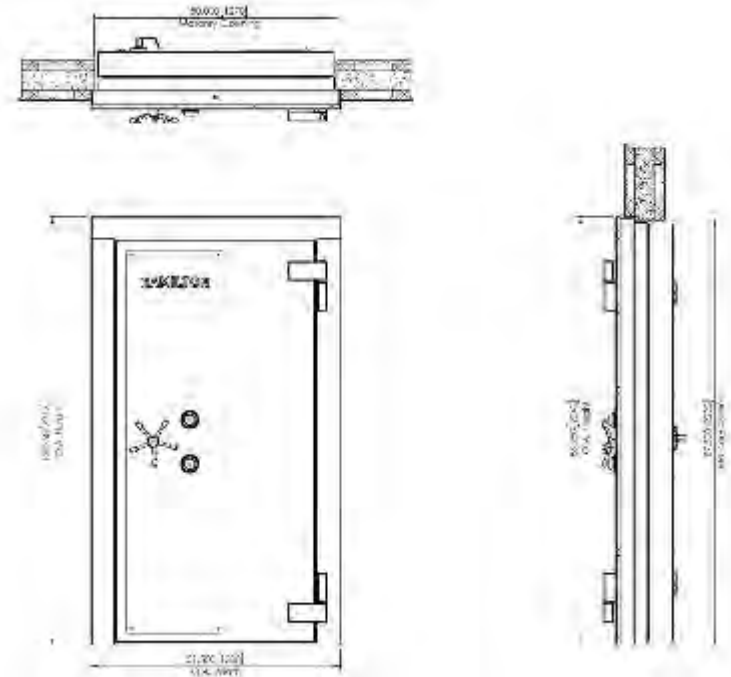
Class M Door



- ✓ Security Rating
- ✓ 3 Hour Fire
- Ballistic Rated
- Acoustic Rated

Class 1, 2, and 3 Door

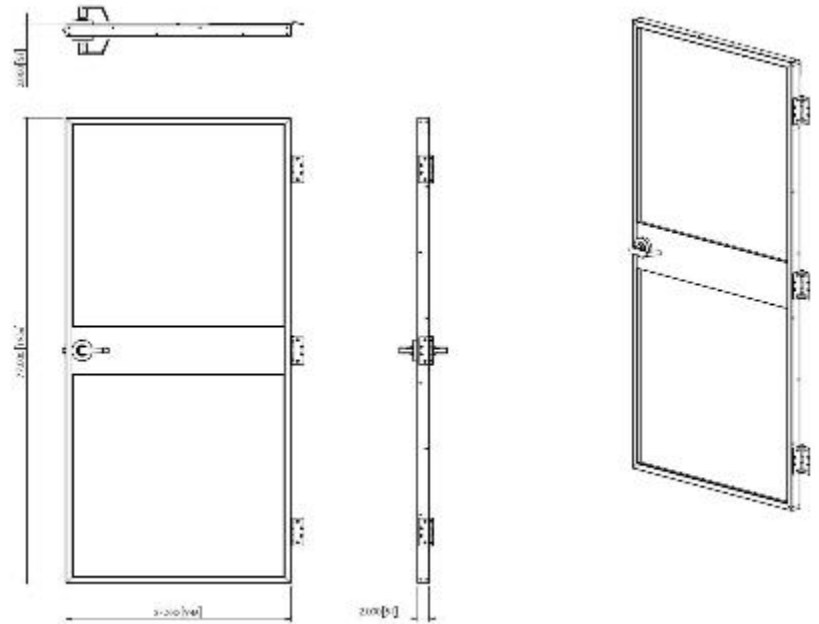
- Security Rating
- 3 Hour Fire
- Daygate
- Spoke Handle
- Painted/Stainless





Daygate

- Acrylic
- Powder Coated
- ADA Handle
- Three Steel Hinges



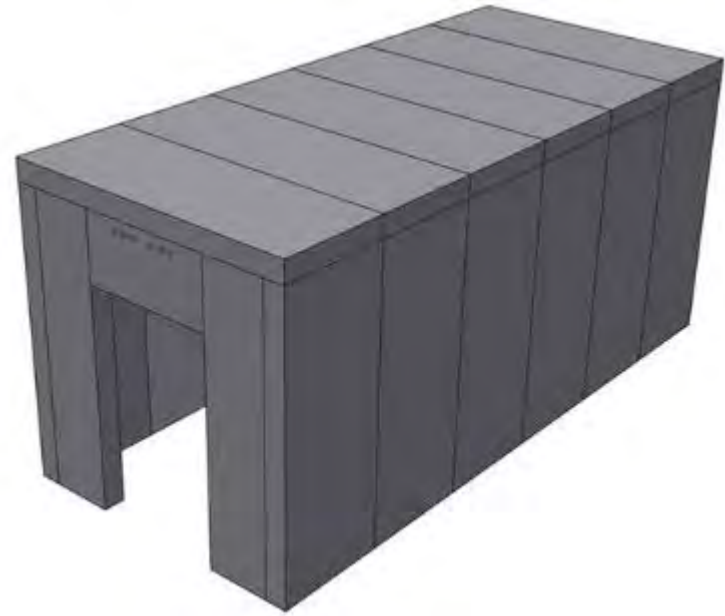
UL Retest Vault Panels



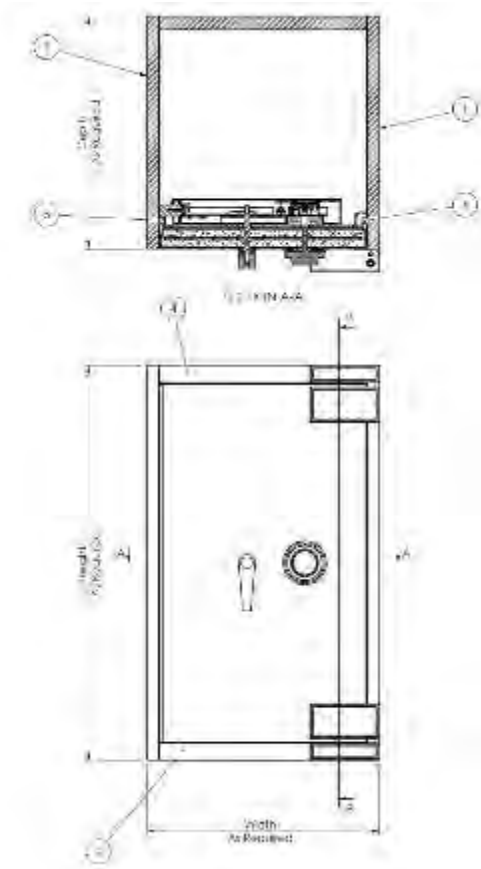


UL Vault Panels

- Class 1 = 4"
- Class 2 = 7"
- Class 3 = 10"



Steel Safe Retest

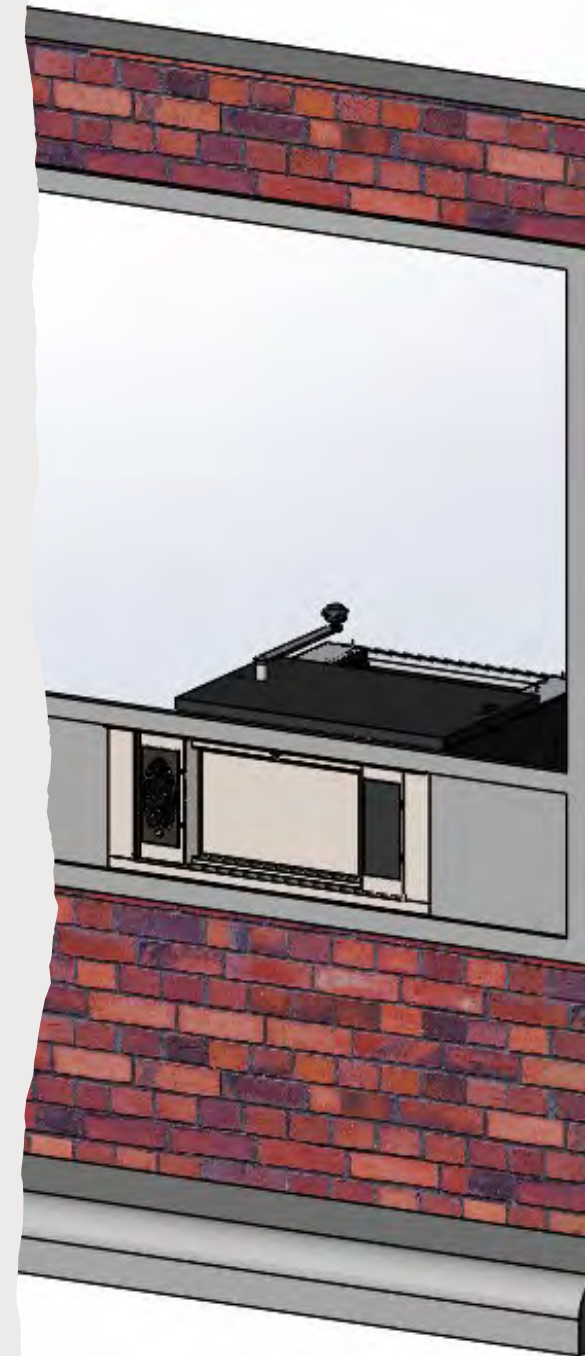
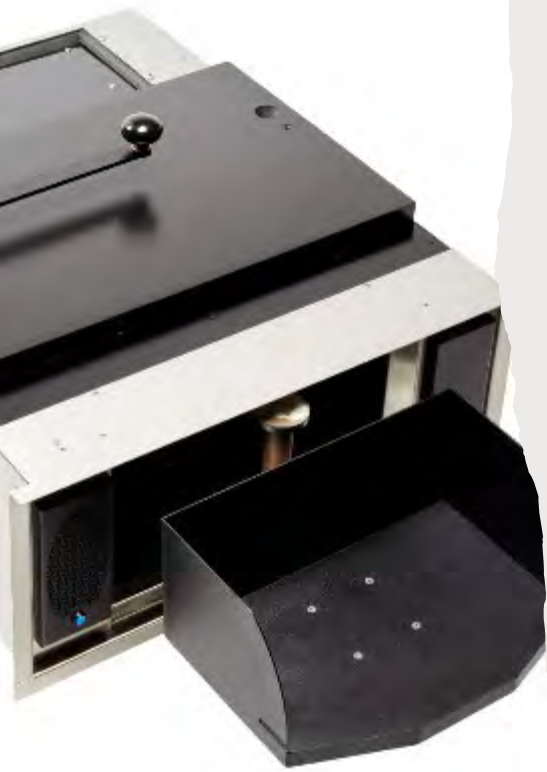


- UL-291
- UL-15
- UL-30
- UL-30 with Composite Door



New Manual Deal Drawer Model # SLCD-Man Shipping Now

- One Million cycles
- Low maintenance
- Plug and Play audio
- Heater Option P&P
- Adjusts for curb width
- Sealed from outside
- BR rating soon





Projects

- Beta Sites – New Head
- Refresh Audio Console and 12” Video Housing
- New Large Motorized Deal Drawer
- Non UL Head Updates
- New B-Rate



Awards