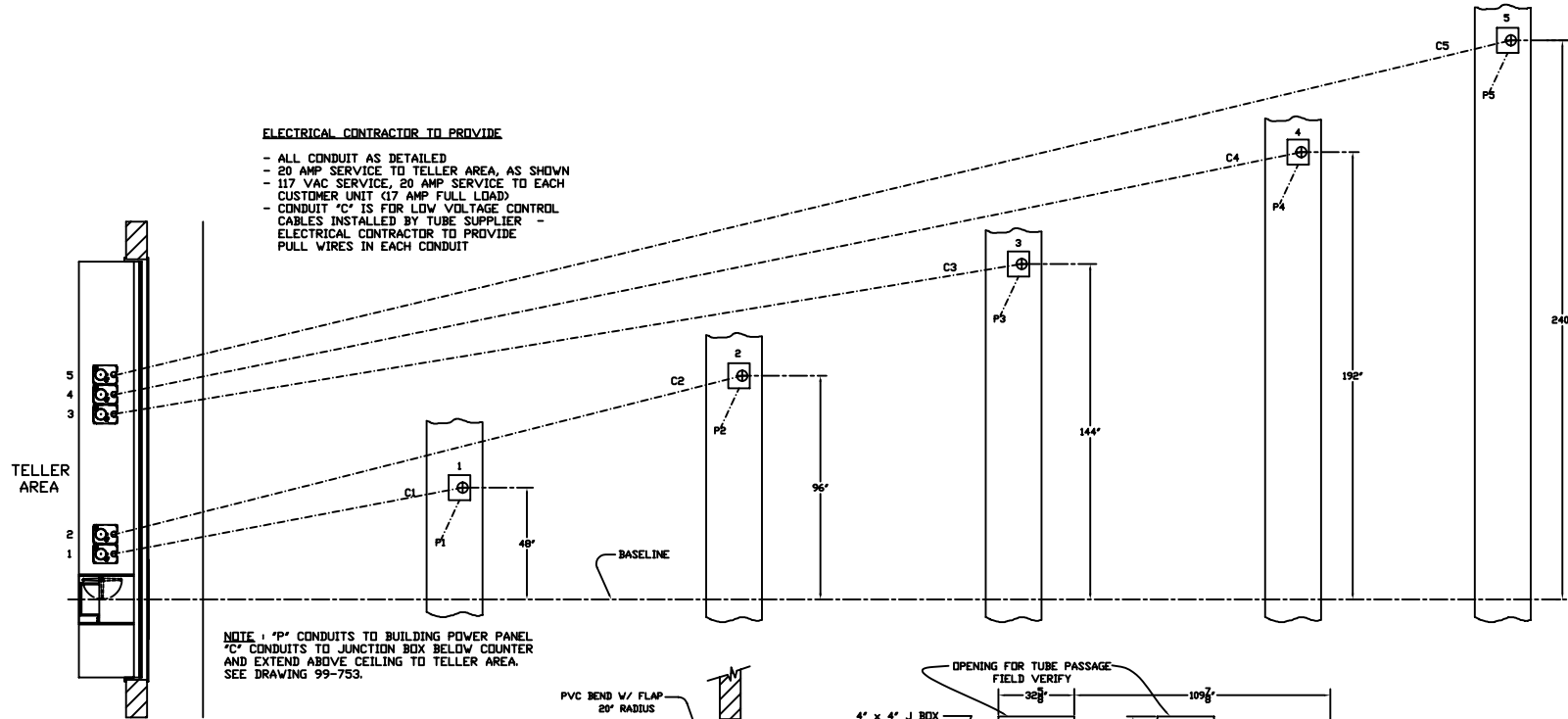
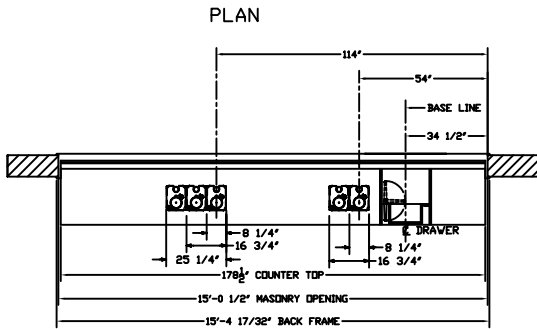


ELECTRICAL CONTRACTOR TO PROVIDE

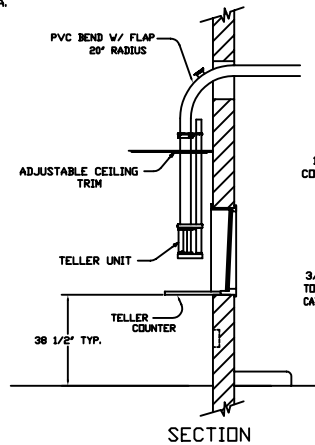
- ALL CONDUIT AS DETAILED
- 20 AMP SERVICE TO TELLER AREA, AS SHOWN
- 117 VAC SERVICE, 20 AMP SERVICE TO EACH CUSTOMER UNIT (17 AMP FULL LOAD)
- CONDUIT "C" IS FOR LOW VOLTAGE CONTROL CABLES INSTALLED BY TUBE SUPPLIER
- ELECTRICAL CONTRACTOR TO PROVIDE PULL WIRES IN EACH CONDUIT



NOTE: "P" CONDUITS TO BUILDING POWER PANEL
 "C" CONDUITS TO JUNCTION BOX BELOW COUNTER
 AND EXTEND ABOVE CEILING TO TELLER AREA.
 SEE DRAWING 99-753.

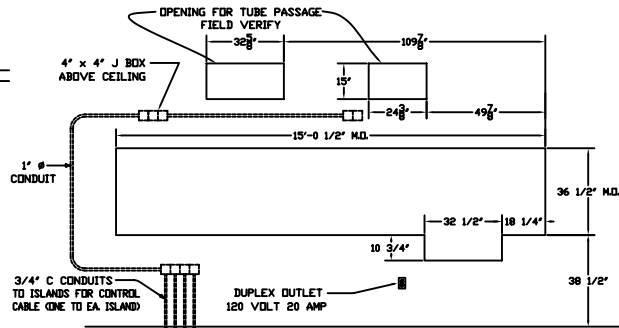


PLAN - INTERIOR

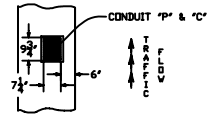


SECTION

REFERENCE DRAWING NUMBER # 99-752 ; 99-753



MASONRY DETAIL
 (FOR MODEL 315D U.L. WINDOW)



ISLAND DETAIL
 (ALSO SEE DWG. 99-754)

HAMILTON AIR
 MODEL HA-45
 513 SYSTEM - UPSEND
 INTERIOR DETAILS

REV.-1	DATE: --	
REV.-2	DATE: .	
REV.-3	DATE: .	

Drawing Number : 99-995 Date : 3-31-08