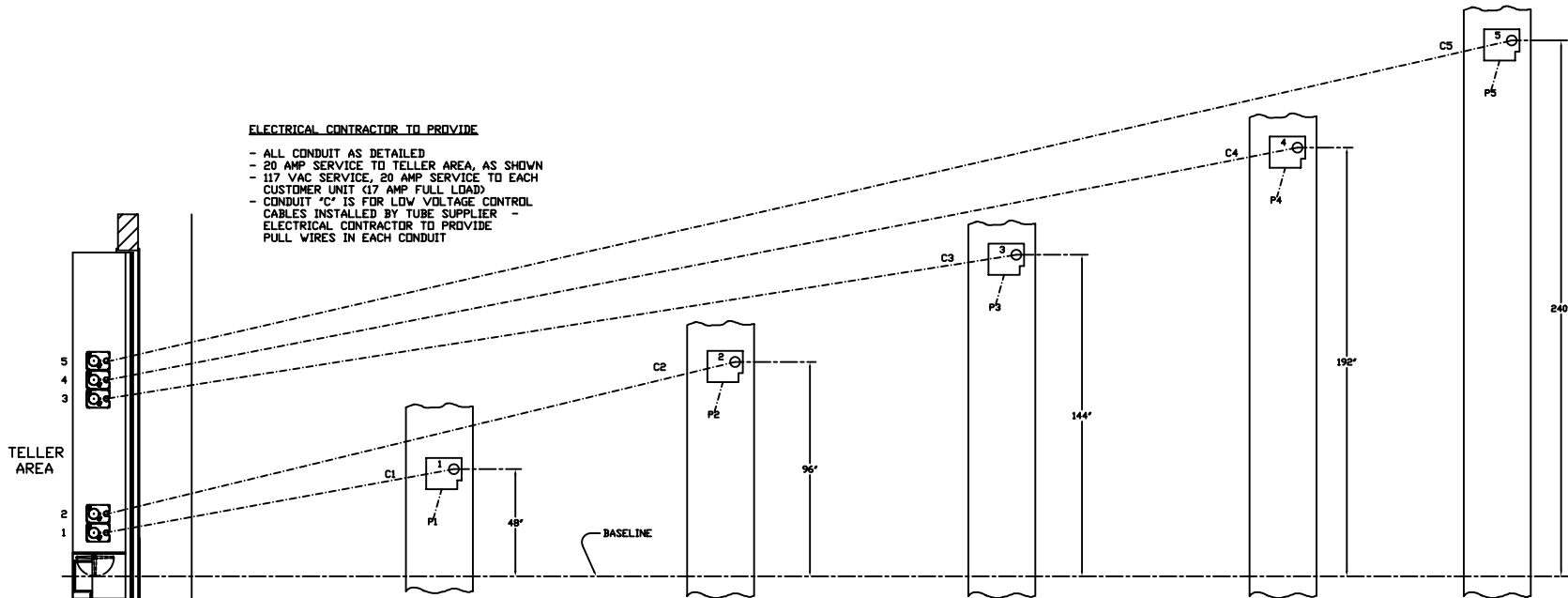
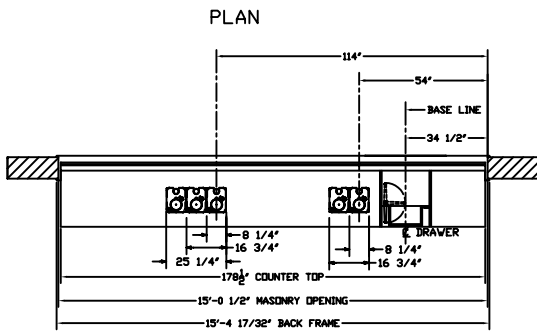


**ELECTRICAL CONTRACTOR TO PROVIDE**

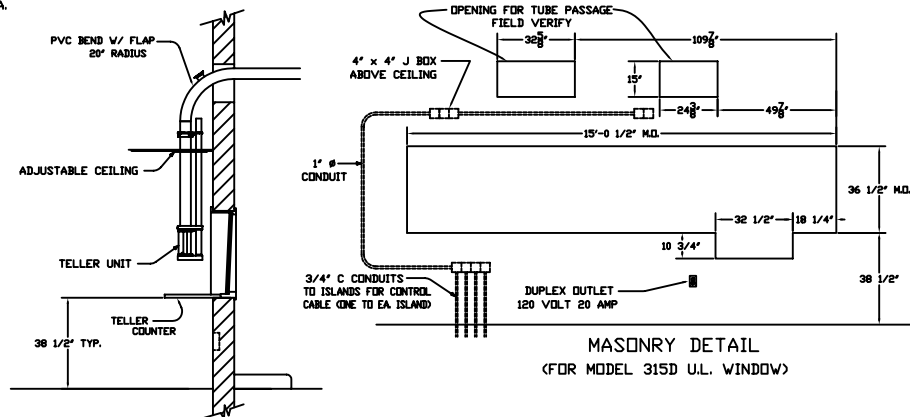
- ALL CONDUIT AS DETAILED
- 20 AMP SERVICE TO TELLER AREA, AS SHOWN
- 117 VAC SERVICE, 20 AMP SERVICE TO EACH CUSTOMER UNIT (17 AMP FULL LOAD)
- CONDUIT "C" IS FOR LOW VOLTAGE CONTROL CABLES INSTALLED BY TUBE SUPPLIER
- ELECTRICAL CONTRACTOR TO PROVIDE PULL WIRES IN EACH CONDUIT



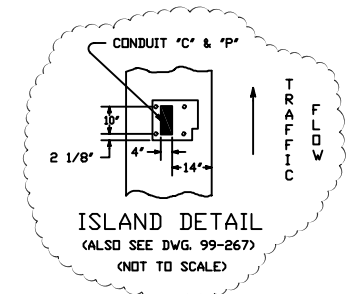
NOTE: "P" CONDUITS TO BUILDING POWER PANEL  
 "C" CONDUITS TO JUNCTION BOX BELOW COUNTER  
 AND EXTEND ABOVE CEILING TO TELLER AREA.  
 SEE DRAWING 99-266.



PLAN - INTERIOR



SECTION  
 REFERENCE DRAWING NUMBER #99-265 ; 99-266



MASONRY DETAIL  
 (FOR MODEL 315D U.L. WINDOW)

**HAMILTON AIR**  
 MODEL HA-1000  
 513 SYSTEM - UPSEND  
 INTERIOR DETAILS

REV.-1	DATE: 4/28/05	NEW STYLE TELLER
REV.-2	DATE:	
REV.-3	DATE:	

Drawing Number : 99-836 Date : 8-26-02