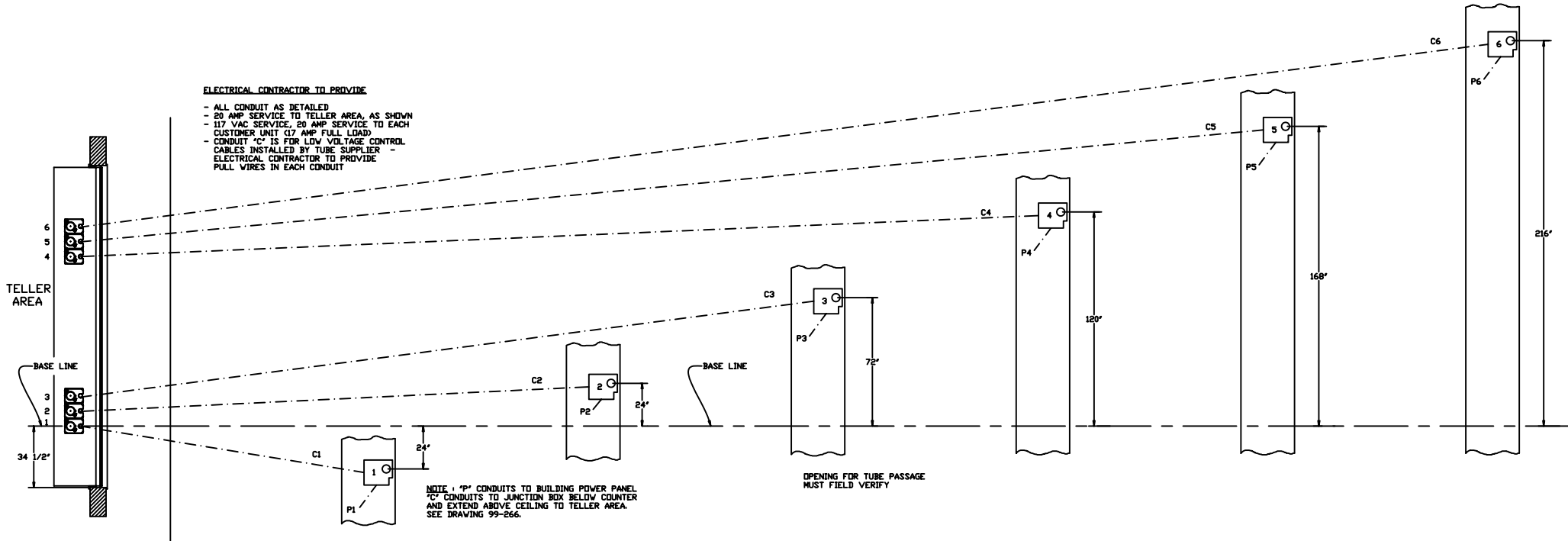
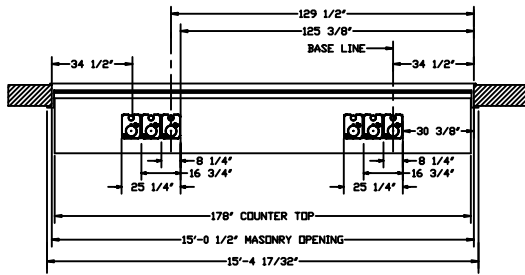
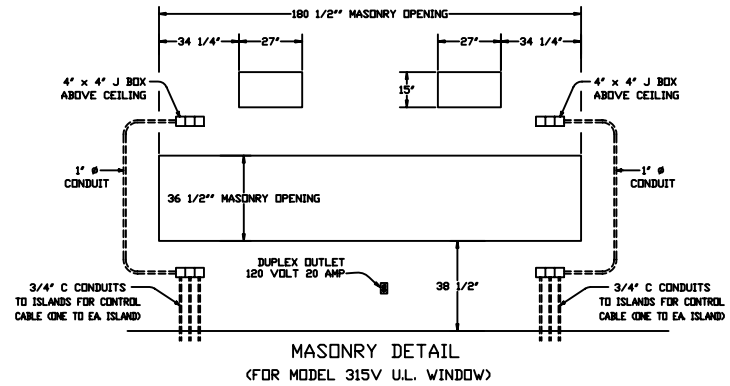
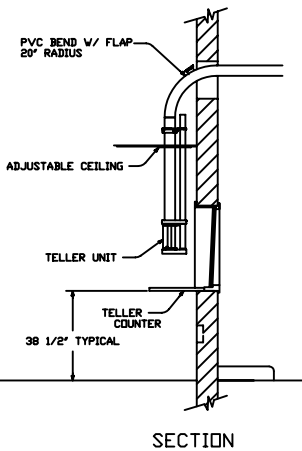
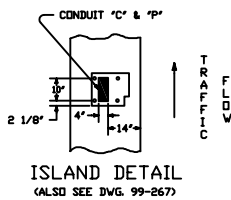


ELECTRICAL CONTRACTOR TO PROVIDE

- ALL CONDUIT AS DETAILED
- 20 AMP SERVICE TO TELLER AREA, AS SHOWN
- 117 VAC SERVICE, 20 AMP SERVICE TO EACH CUSTOMER UNIT (17 AMP FULL LOAD)
- CONDUIT "C" IS FOR LOW VOLTAGE CONTROL
- CABLES INSTALLED BY TUBE SUPPLIER
- ELECTRICAL CONTRACTOR TO PROVIDE PULL WIRES IN EACH CONDUIT



PLAN



PLAN - INTERIOR

HAMILTON AIR
 MODEL HA-1000 UPSEND
 603 SYSTEM WITH A 315V
 WITH ATM LANE / INT. DETAILS
 Drawing Number : 99-738 | Date : 2/19/01