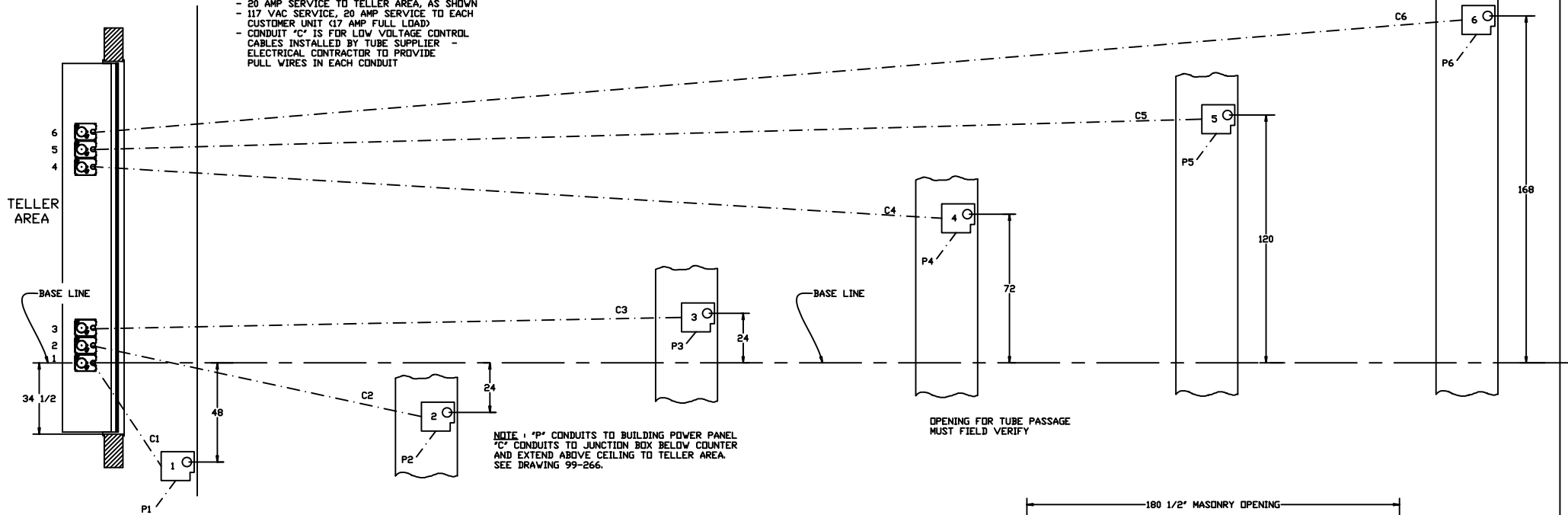
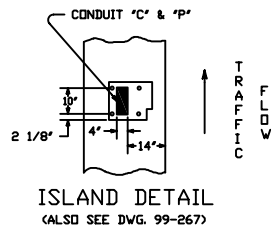


ELECTRICAL CONTRACTOR TO PROVIDE

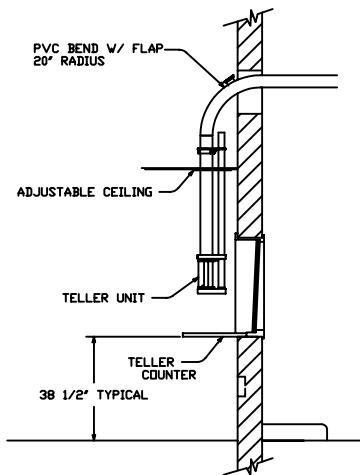
- ALL CONDUIT AS DETAILED
- 20 AMP SERVICE TO TELLER AREA, AS SHOWN
- 117 VAC SERVICE, 20 AMP SERVICE TO EACH CUSTOMER UNIT (17 AMP FULL LOAD)
- CONDUIT "C" IS FOR LOW VOLTAGE CONTROL CABLES INSTALLED BY TUBE SUPPLIER - ELECTRICAL CONTRACTOR TO PROVIDE PULL WIRES IN EACH CONDUIT



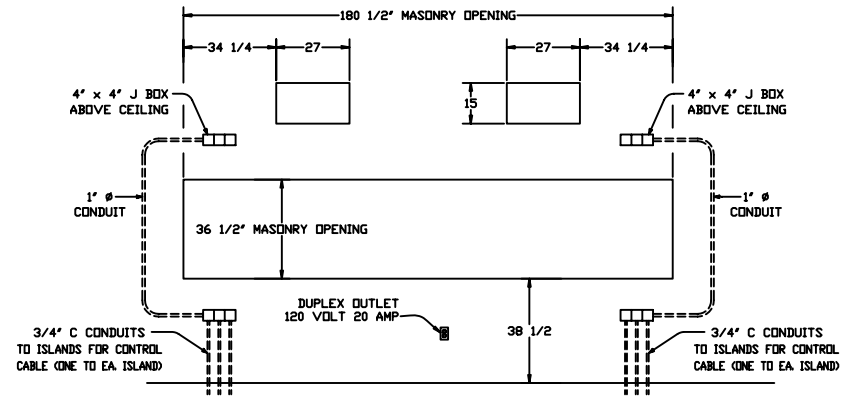
PLAN



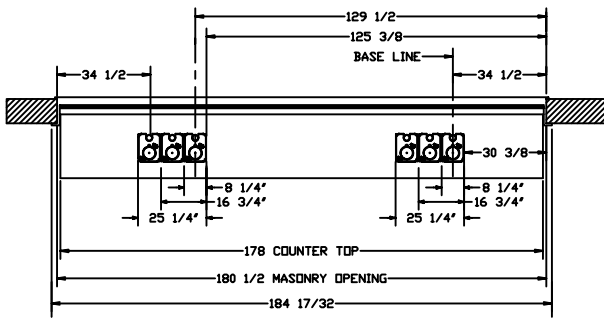
ISLAND DETAIL
(ALSO SEE DWG. 99-267)



SECTION



MASONRY DETAIL
(FOR MODEL 315V U.L. WINDOW)



PLAN - INTERIOR

HAMILTON AIR
 MODEL HA-1000 UPSEND
 603 SYSTEM WITH A 315V
 INTERIOR DETAILS

Drawing Number : 99-736	Date : 2/8/01
-------------------------	---------------