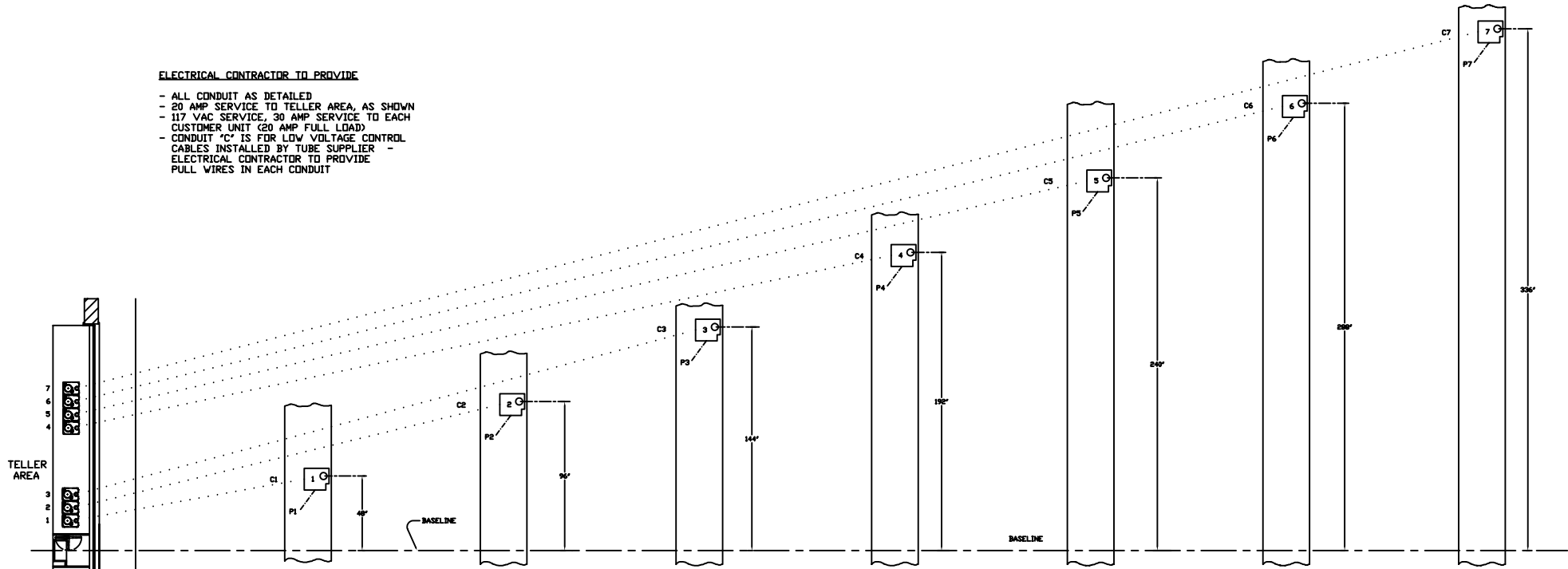


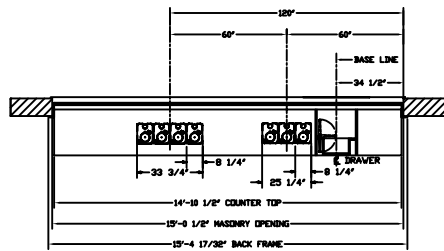
**ELECTRICAL CONTRACTOR TO PROVIDE**

- ALL CONDUIT AS DETAILED
- 20 AMP SERVICE TO TELLER AREA, AS SHOWN
- 117 VAC SERVICE, 30 AMP SERVICE TO EACH CUSTOMER UNIT (20 AMP FULL LOAD)
- CONDUIT "C" IS FOR LOW VOLTAGE CONTROL CABLES INSTALLED BY TUBE SUPPLIER - ELECTRICAL CONTRACTOR TO PROVIDE PULL WIRES IN EACH CONDUIT

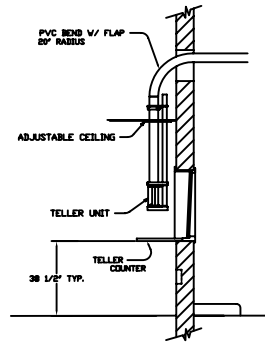


NOTE : "P" CONDUITS TO BUILDING POWER PANEL  
 "C" CONDUITS TO JUNCTION BOX BELOW COUNTER  
 AND EXTEND ABOVE CEILING TO TELLER AREA.  
 SEE DRAWING 99-266.

PLAN

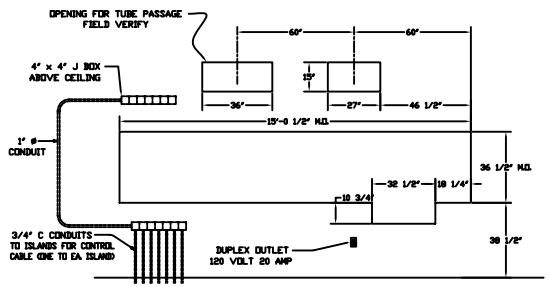


PLAN - INTERIOR

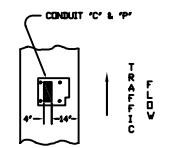


SECTION

REFERENCE DRAWING NUMBER 899-265 ; 99-266



MASONRY DETAIL  
 (FOR MODEL 315D U.L. WINDOW)



ISLAND DETAIL  
 (ALSO SEE DNG. 99-267)

**HAMILTON AIR**  
 MODEL HA-1000  
 714 SYSTEM - UPSEND  
 INTERIOR DETAILS

REV-1	DATE: 9-23-99	CHG FROM 20" TO 20" RADIUS
REV-2	DATE: 4/28/05	REV STYLE TELLER
REV-3	DATE:	

Drawing Number : 99-711      Date : 5/6/97