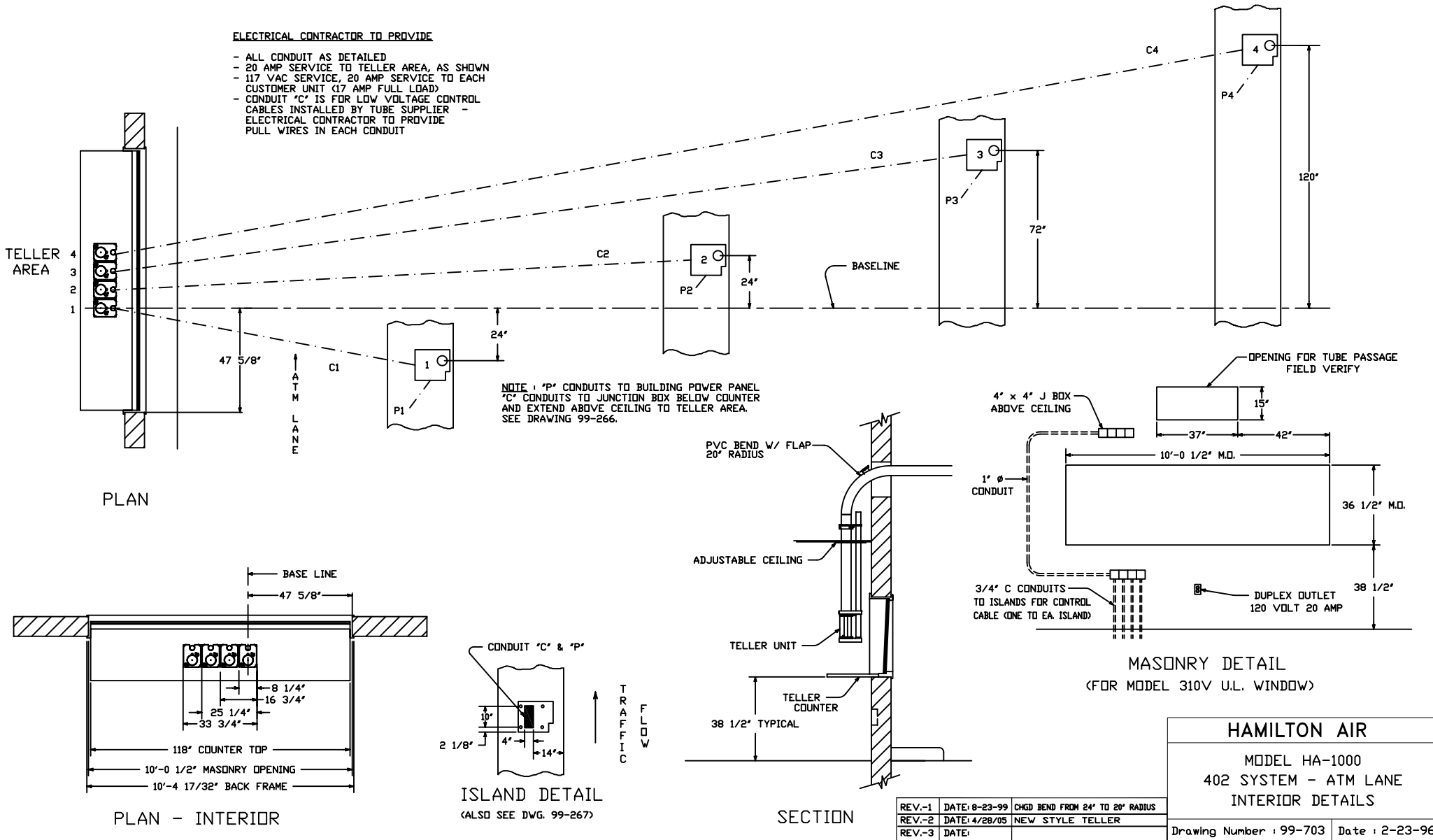


ELECTRICAL CONTRACTOR TO PROVIDE

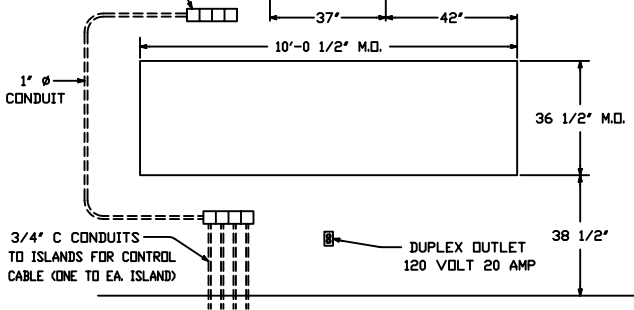
- ALL CONDUIT AS DETAILED
- 20 AMP SERVICE TO TELLER AREA, AS SHOWN
- 117 VAC SERVICE, 20 AMP SERVICE TO EACH CUSTOMER UNIT (17 AMP FULL LOAD)
- CONDUIT 'C' IS FOR LOW VOLTAGE CONTROL CABLES INSTALLED BY TUBE SUPPLIER
- ELECTRICAL CONTRACTOR TO PROVIDE PULL WIRES IN EACH CONDUIT



NOTE: 'P' CONDUITS TO BUILDING POWER PANEL
'C' CONDUITS TO JUNCTION BOX BELOW COUNTER
AND EXTEND ABOVE CEILING TO TELLER AREA.
SEE DRAWING 99-266.

OPENING FOR TUBE PASSAGE
FIELD VERIFY

4" x 4" J BOX
ABOVE CEILING



MASONRY DETAIL
(FOR MODEL 310V U.L. WINDOW)

HAMILTON AIR	
MODEL HA-1000 402 SYSTEM - ATM LANE INTERIOR DETAILS	
REV.-1	DATE: 8-23-99
REV.-2	DATE: 4/28/05
REV.-3	DATE:
CHGD BEND FROM 24" TO 20" RADIUS NEW STYLE TELLER	
Drawing Number : 99-703	
Date : 2-23-96	

REV.-1	DATE: 8-23-99	CHGD BEND FROM 24" TO 20" RADIUS
REV.-2	DATE: 4/28/05	NEW STYLE TELLER
REV.-3	DATE:	

PLAN

PLAN - INTERIOR

ISLAND DETAIL
(ALSO SEE DWG. 99-267)

SECTION

HAMILTON AIR

MODEL HA-1000
402 SYSTEM - ATM LANE
INTERIOR DETAILS

Drawing Number : 99-703 Date : 2-23-96