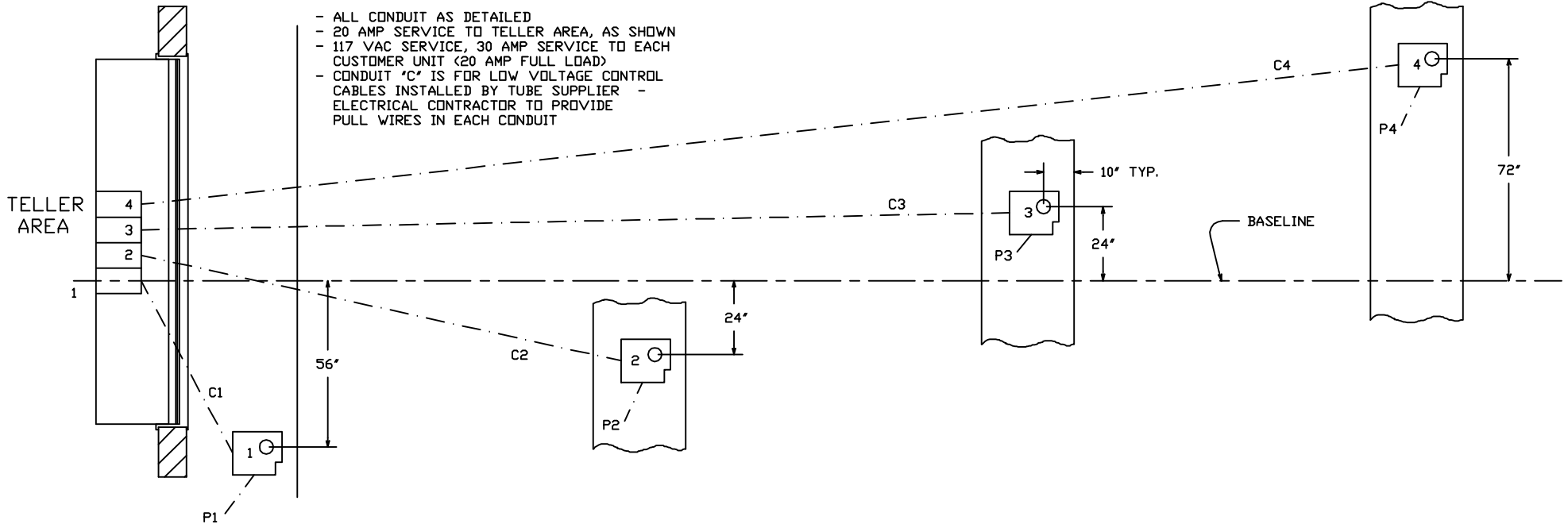


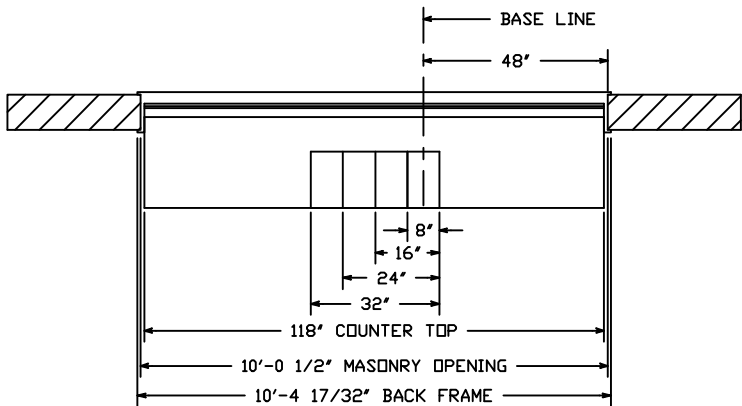
**ELECTRICAL CONTRACTOR TO PROVIDE**

- ALL CONDUIT AS DETAILED
- 20 AMP SERVICE TO TELLER AREA, AS SHOWN
- 117 VAC SERVICE, 30 AMP SERVICE TO EACH CUSTOMER UNIT (20 AMP FULL LOAD)
- CONDUIT 'C' IS FOR LOW VOLTAGE CONTROL CABLES INSTALLED BY TUBE SUPPLIER - ELECTRICAL CONTRACTOR TO PROVIDE PULL WIRES IN EACH CONDUIT

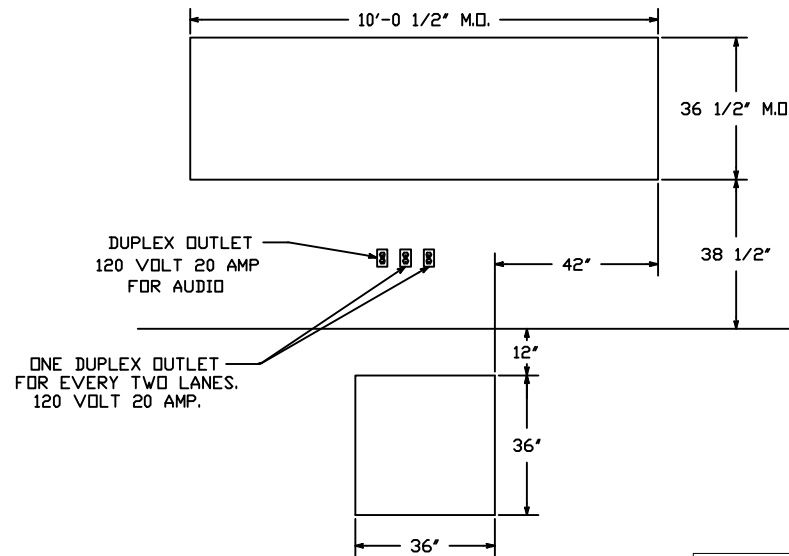


PLAN

NOTE: 'P' CONDUITS TO BUILDING POWER PANEL.  
'C' CONDUITS TO TELLER UNIT TEMPLATE.



PLAN - INTERIOR



MASONRY DETAIL  
(FOR MODEL 310V U.L. WINDOW)

<b>HAMILTON AIR</b>	
MODEL HA-1000-D 402 SYSTEM - DOWNSEND INTERIOR DETAILS	
Drawing Number : 99-367	Date : 8-23-91