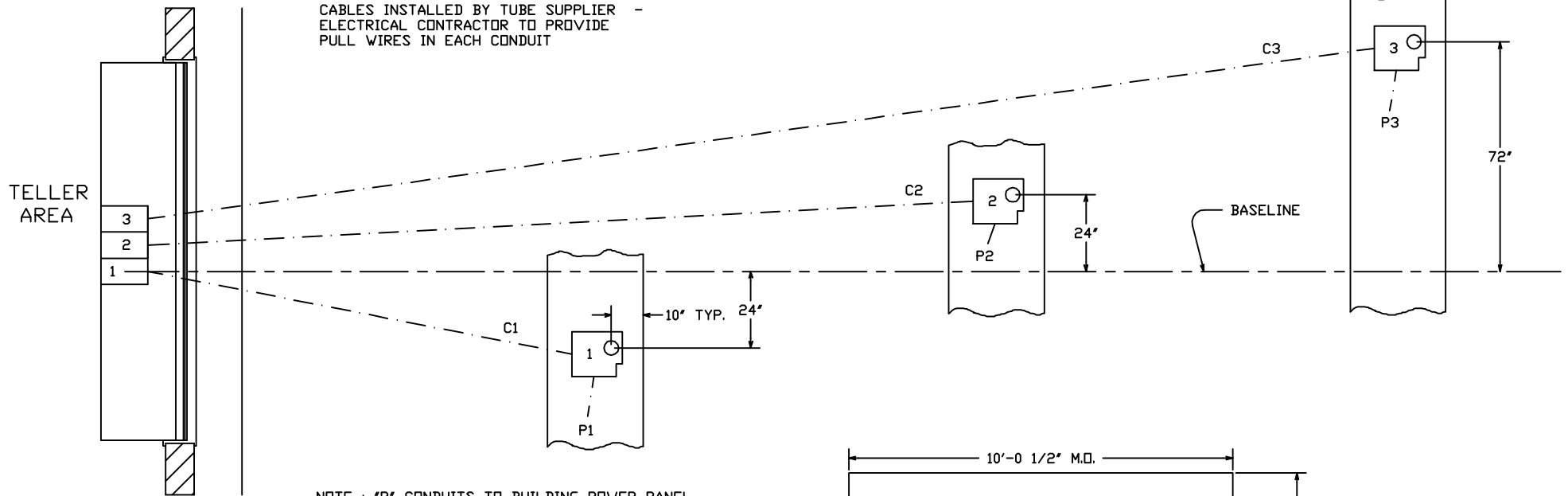


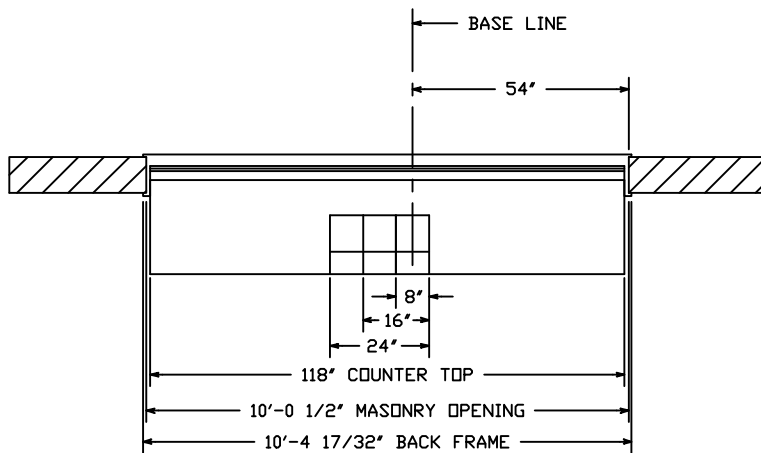
ELECTRICAL CONTRACTOR TO PROVIDE

- ALL CONDUIT AS DETAILED
- 20 AMP SERVICE TO TELLER AREA, AS SHOWN
- 117 VAC SERVICE, 30 AMP SERVICE TO EACH CUSTOMER UNIT (20 AMP FULL LOAD)
- CONDUIT "C" IS FOR LOW VOLTAGE CONTROL CABLES INSTALLED BY TUBE SUPPLIER - ELECTRICAL CONTRACTOR TO PROVIDE PULL WIRES IN EACH CONDUIT

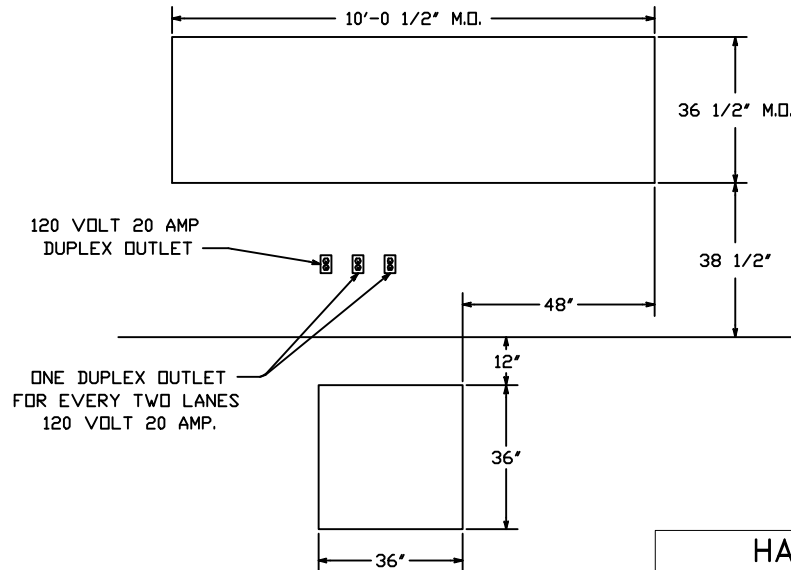


PLAN

NOTE : "P" CONDUITS TO BUILDING POWER PANEL  
"C" CONDUITS TO TELLER UNIT TEMPLATE.



PLAN - INTERIOR



MASONRY DETAIL  
(FOR MODEL 310V U.L. WINDOW)

<b>HAMILTON AIR</b>	
MODEL HA-1000-D 302 SYSTEM - ATM LANE INTERIOR DETAILS	
Drawing Number : 99-363	Date : 8-23-91