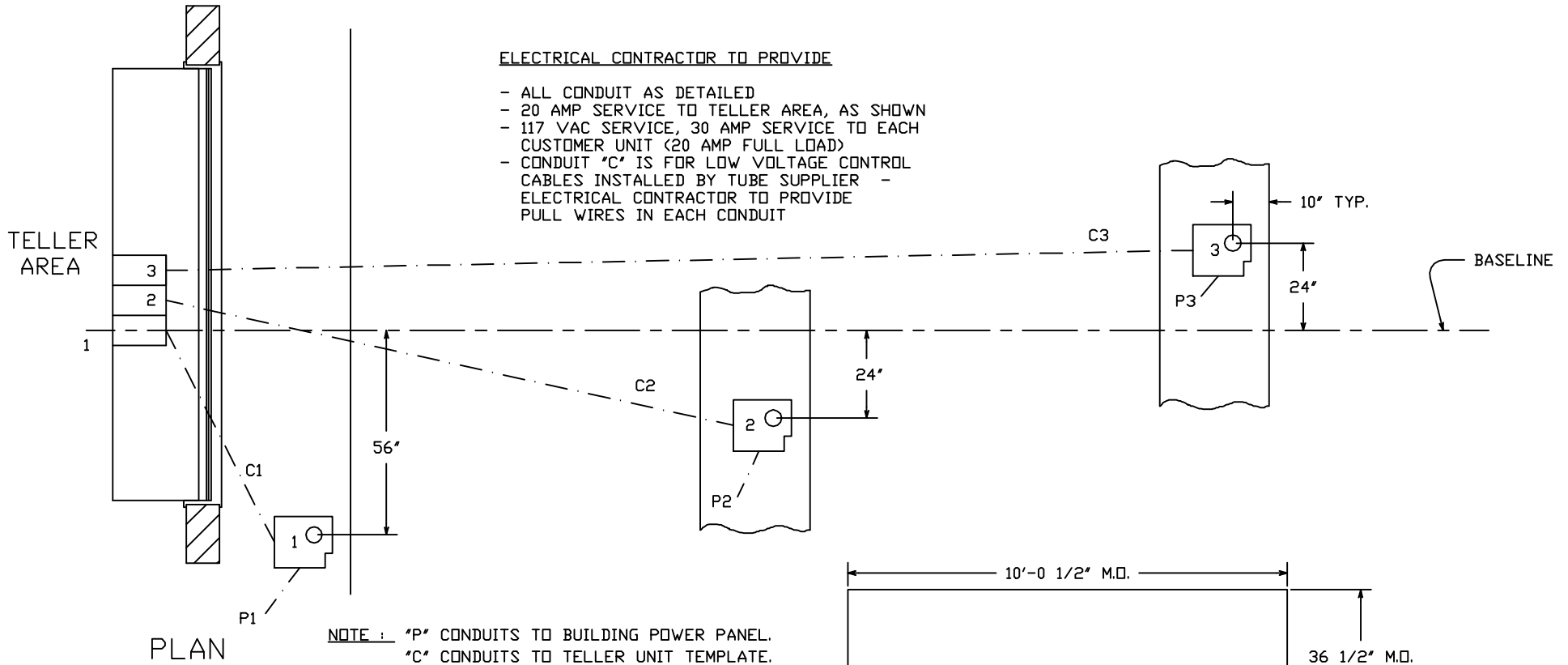
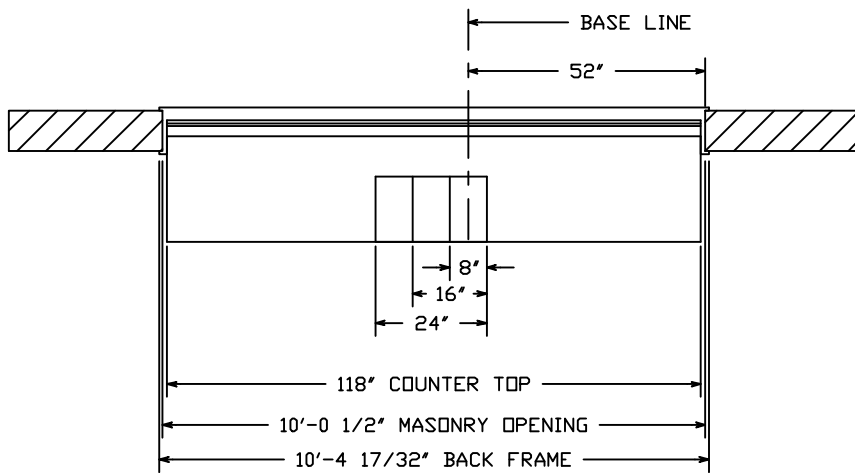


ELECTRICAL CONTRACTOR TO PROVIDE

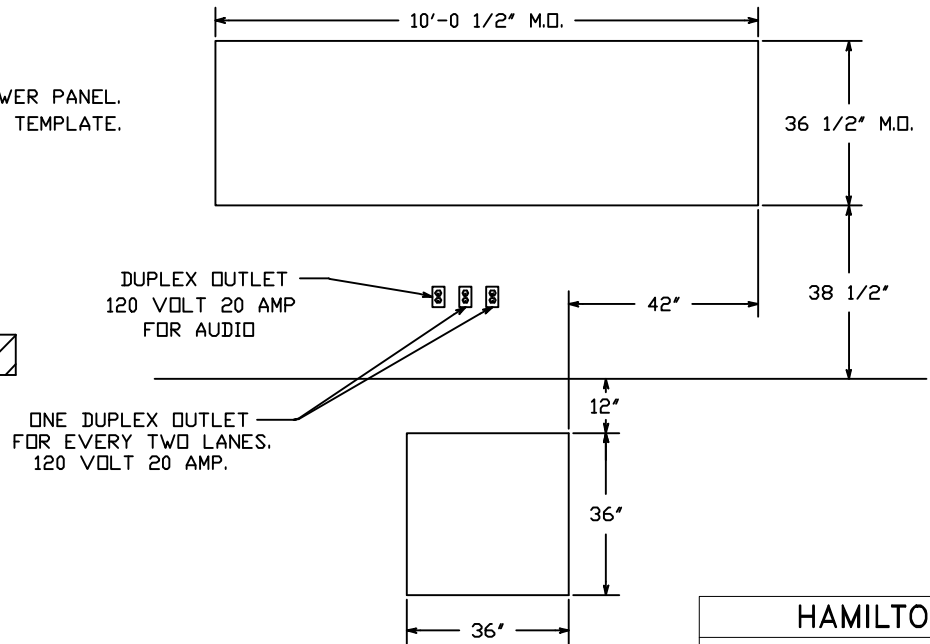
- ALL CONDUIT AS DETAILED
- 20 AMP SERVICE TO TELLER AREA, AS SHOWN
- 117 VAC SERVICE, 30 AMP SERVICE TO EACH CUSTOMER UNIT (20 AMP FULL LOAD)
- CONDUIT 'C' IS FOR LOW VOLTAGE CONTROL CABLES INSTALLED BY TUBE SUPPLIER - ELECTRICAL CONTRACTOR TO PROVIDE PULL WIRES IN EACH CONDUIT



NOTE : "P" CONDUITS TO BUILDING POWER PANEL.
 "C" CONDUITS TO TELLER UNIT TEMPLATE.



PLAN - INTERIOR



MASONRY DETAIL
 (FOR MODEL 310V U.L. WINDOW)

HAMILTON AIR	
MODEL HA-1000-D 302 SYSTEM - DOWNSEND INTERIOR DETAILS	
Drawing Number : 99-361	Date : 8-23-91