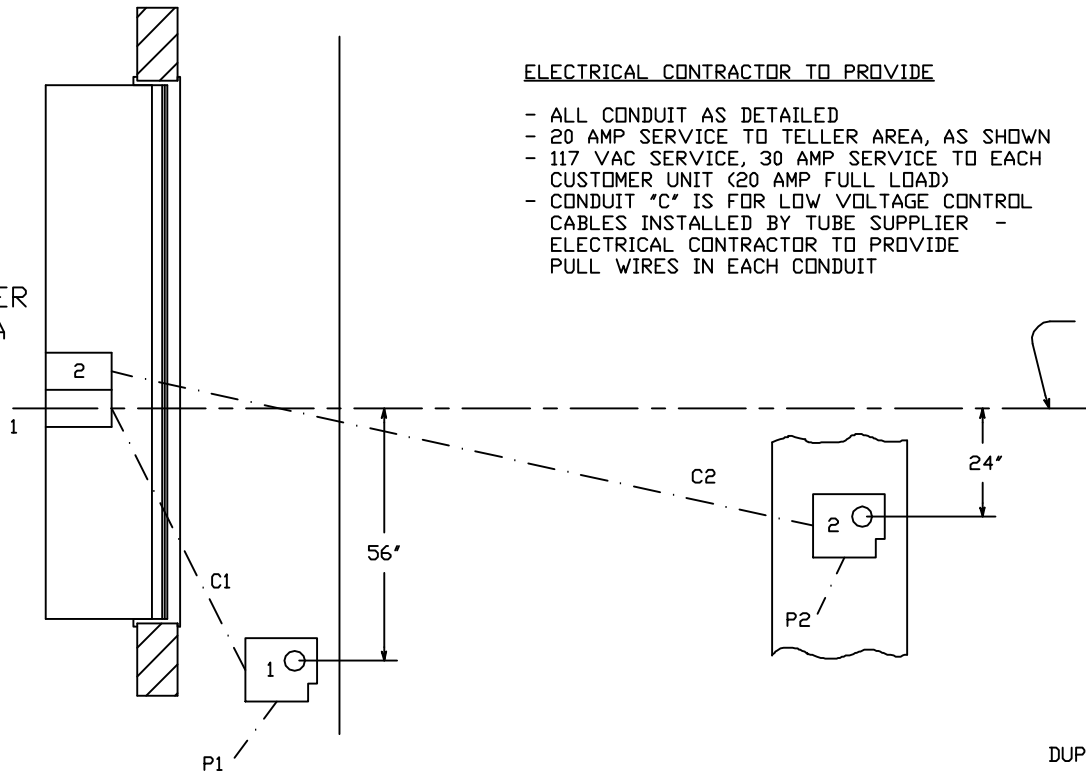


ELECTRICAL CONTRACTOR TO PROVIDE

- ALL CONDUIT AS DETAILED
- 20 AMP SERVICE TO TELLER AREA, AS SHOWN
- 117 VAC SERVICE, 30 AMP SERVICE TO EACH CUSTOMER UNIT (20 AMP FULL LOAD)
- CONDUIT "C" IS FOR LOW VOLTAGE CONTROL CABLES INSTALLED BY TUBE SUPPLIER - ELECTRICAL CONTRACTOR TO PROVIDE PULL WIRES IN EACH CONDUIT

TELLER AREA



PLAN

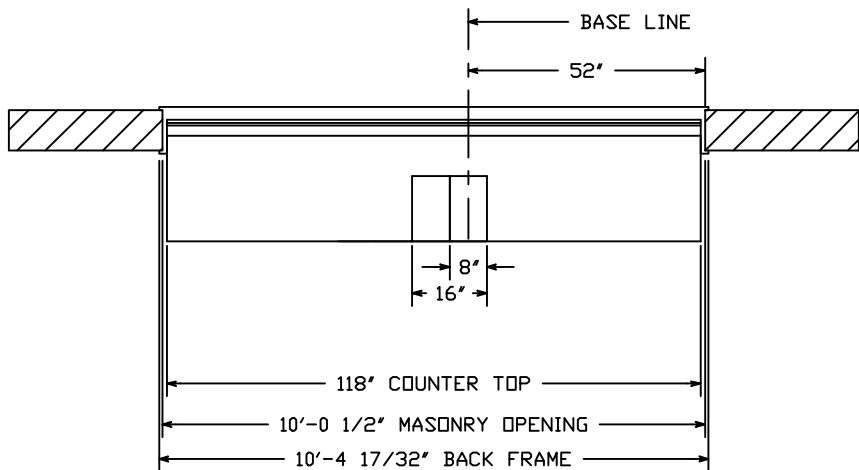
NOTE : "P" CONDUITS TO BUILDING POWER PANEL.
"C" CONDUITS TO TELLER UNIT TEMPLATE.

DUPLEX OUTLET
120 VOLT 20 AMP
FOR AUDIO

ONE DUPLEX OUTLET
FOR EVERY TWO LANES.
120 VOLT 20 AMP.

MASONRY DETAIL

(FOR MODEL 310V U.L. WINDOW)



PLAN - INTERIOR

HAMILTON AIR

MODEL HA-1000-D
202 SYSTEM - DOWNSEND
INTERIOR DETAILS

Drawing Number : 99-357

Date : 8-23-91