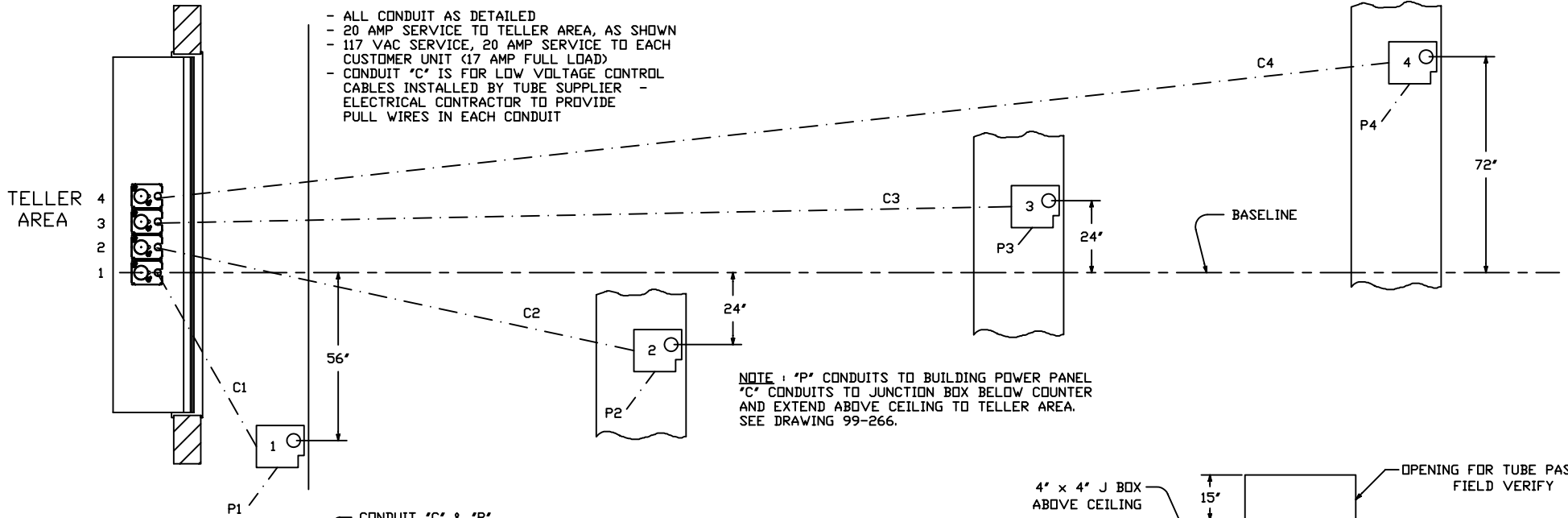


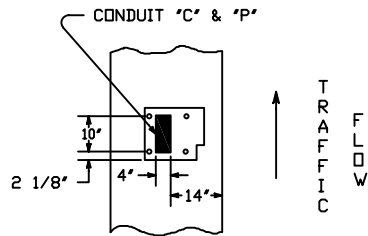
ELECTRICAL CONTRACTOR TO PROVIDE

- ALL CONDUIT AS DETAILED
- 20 AMP SERVICE TO TELLER AREA, AS SHOWN
- 117 VAC SERVICE, 20 AMP SERVICE TO EACH CUSTOMER UNIT (17 AMP FULL LOAD)
- CONDUIT 'C' IS FOR LOW VOLTAGE CONTROL CABLES INSTALLED BY TUBE SUPPLIER - ELECTRICAL CONTRACTOR TO PROVIDE PULL WIRES IN EACH CONDUIT

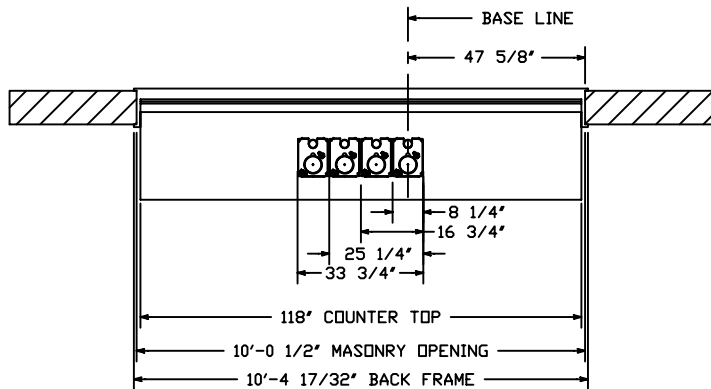


NOTE: 'P' CONDUITS TO BUILDING POWER PANEL
'C' CONDUITS TO JUNCTION BOX BELOW COUNTER AND EXTEND ABOVE CEILING TO TELLER AREA. SEE DRAWING 99-266.

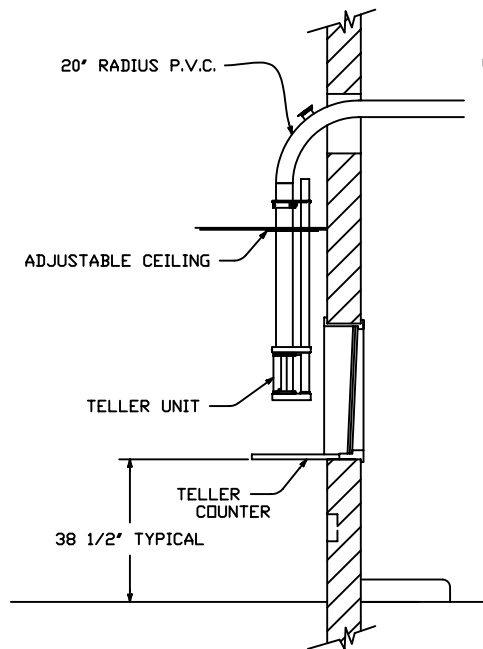
PLAN



ISLAND DETAIL
(ALSO SEE DWG. 99-267)

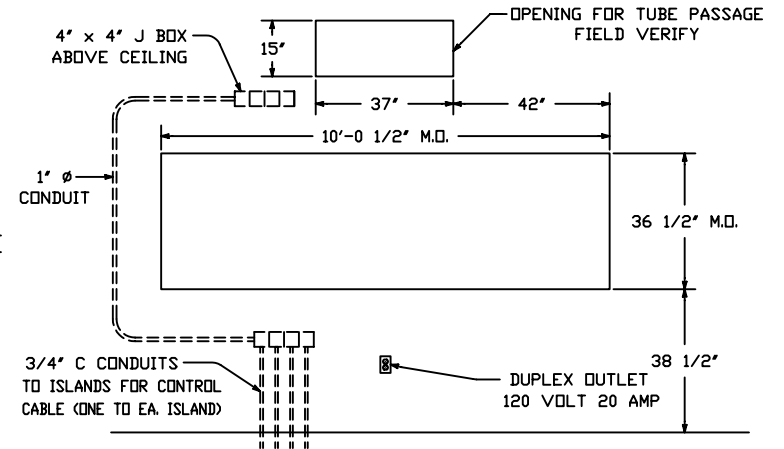


PLAN - INTERIOR



SECTION

REFERENCE DRAWING NUMBER #99-265 ; 99-266



MASONRY DETAIL
(FOR MODEL 310V U.L. WINDOW)

REV.-1 DATE: 8-22-91 CHG THE DIM BETWEEN CUST. UNITS
REV.-2 DATE: 8-17-99 CHGD BEND FROM 24" TO 20" RADIUS
REV.-3 DATE: 4/28/05 NEW STYLE TELLER

HAMILTON AIR

MODEL HA-1000
402 SYSTEM - UPSEND
INTERIOR DETAILS

Drawing Number : 99-283 | Date : 1-23-91