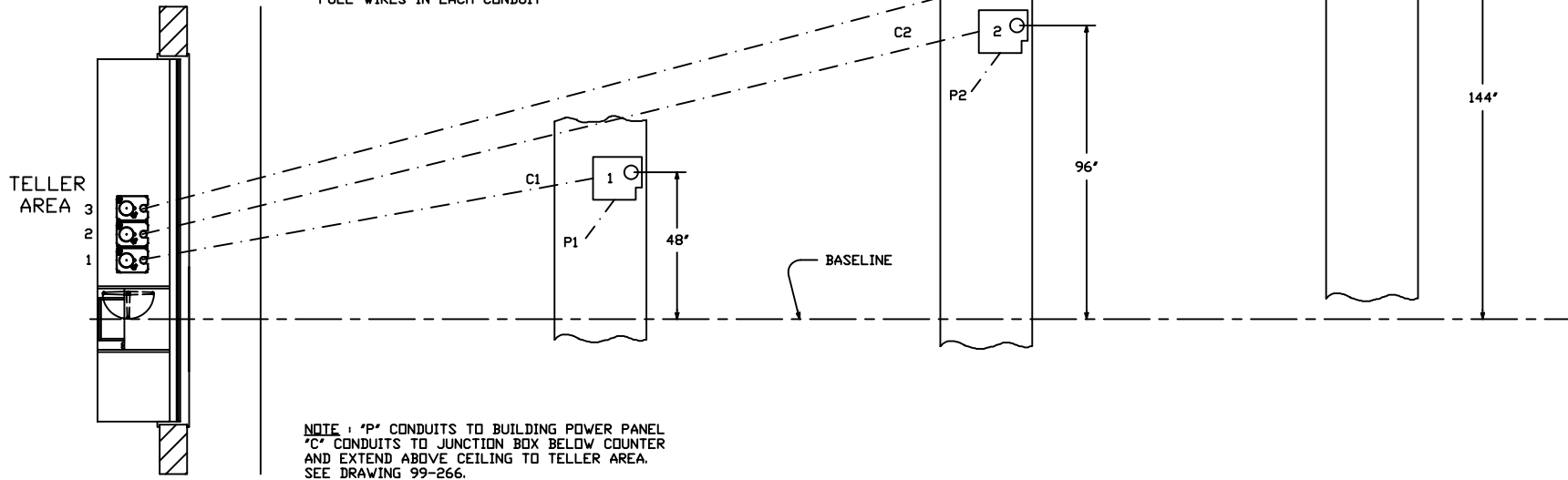


ELECTRICAL CONTRACTOR TO PROVIDE

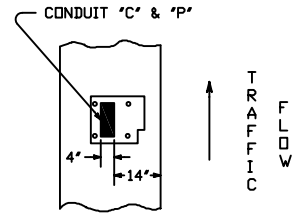
- ALL CONDUIT AS DETAILED
- 20 AMP SERVICE TO TELLER AREA, AS SHOWN
- 117 VAC SERVICE, 20 AMP SERVICE TO EACH CUSTOMER UNIT (17 AMP FULL LOAD)
- CONDUIT "C" IS FOR LOW VOLTAGE CONTROL CABLES INSTALLED BY TUBE SUPPLIER
- ELECTRICAL CONTRACTOR TO PROVIDE PULL WIRES IN EACH CONDUIT



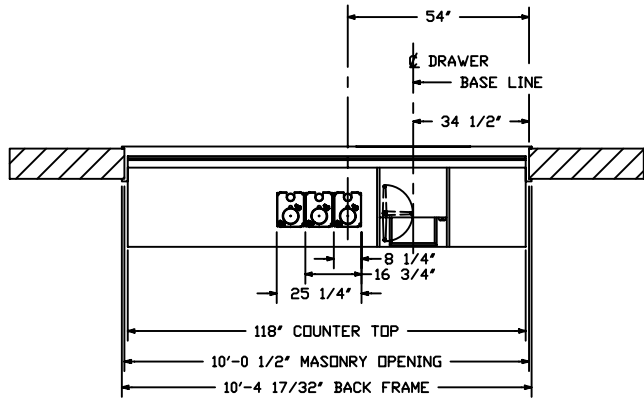
TELLER AREA
3
2
1

NOTE: "P" CONDUITS TO BUILDING POWER PANEL
"C" CONDUITS TO JUNCTION BOX BELOW COUNTER
AND EXTEND ABOVE CEILING TO TELLER AREA.
SEE DRAWING 99-266.

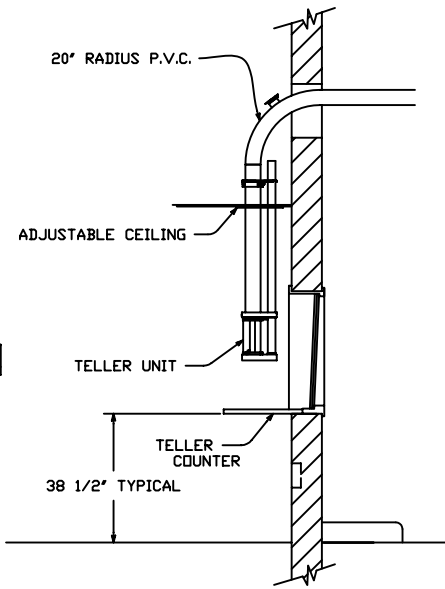
PLAN



ISLAND DETAIL
(ALSO SEE DWG. 99-267)

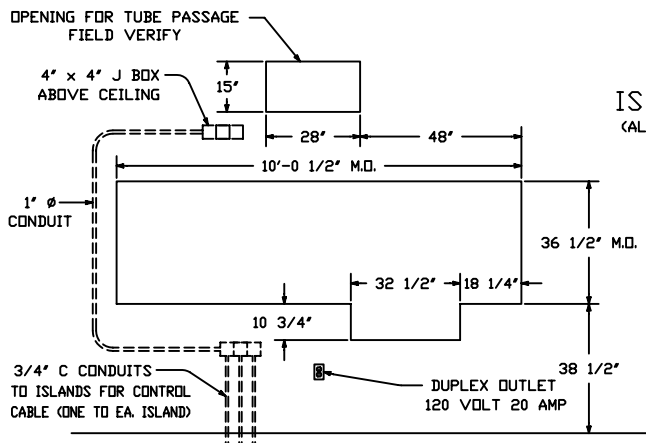


PLAN - INTERIOR



SECTION

REFERENCE DRAWING NUMBER #99-265 ; 99-266



MASONRY DETAIL
(FOR MODEL 310D U.L. WINDOW)

REV-1 DATE: 8-22-91 CHG THE DIM BETWEEN CUST. UNITS
REV-2 DATE: 8-17-99 CHGD BEND FROM 24" TO 20" RADIUS
REV-3 DATE: 4/28/05 NEW STYLE TELLER

HAMILTON AIR

MODEL HA-1000
312 SYSTEM - UPSEND
INTERIOR DETAILS

Drawing Number : 99-281

Date : 1-10-91