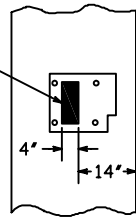


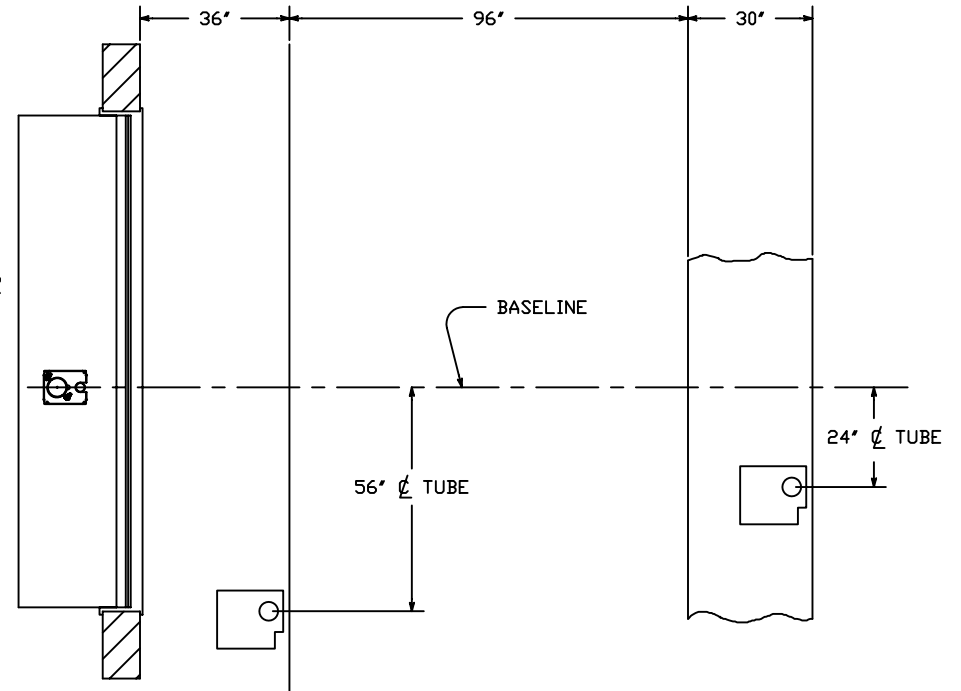
CONDUIT 'P' & 'C'



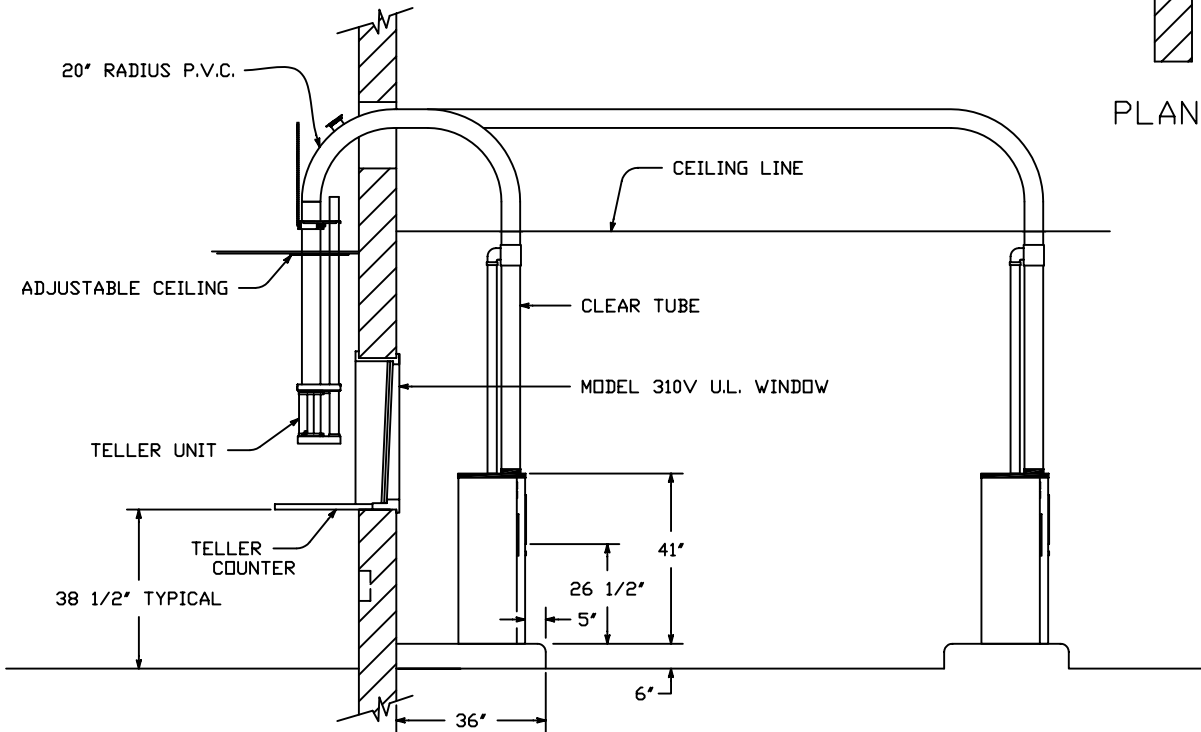
T
R
A
F
F
I
C
↑
F
L
O
W

ISLAND DETAIL
(ALSO SEE DWG No 99-267)

TELLER AREA



PLAN



SECTION

REFERENCE DRAWING NUMBER #99-265 ; 99-266

- REV.-1 DATE: 8-22-91 CHG THE DIM BETWEEN CUST. UNITS
- REV.-2 DATE: 3-18-92 ADDED THE SOFT LANDING KIT
- REV.-3 DATE: 8-17-99 CHGD BEND FROM 24" TO 20" RADIUS
- REV.-4 DATE: 4/28/05 NEW STYLE TELLER

HAMILTON AIR

MODEL HA-1000
202 SYSTEM - UPSEND

Drawing Number : 99-274

Date : 1-10-91